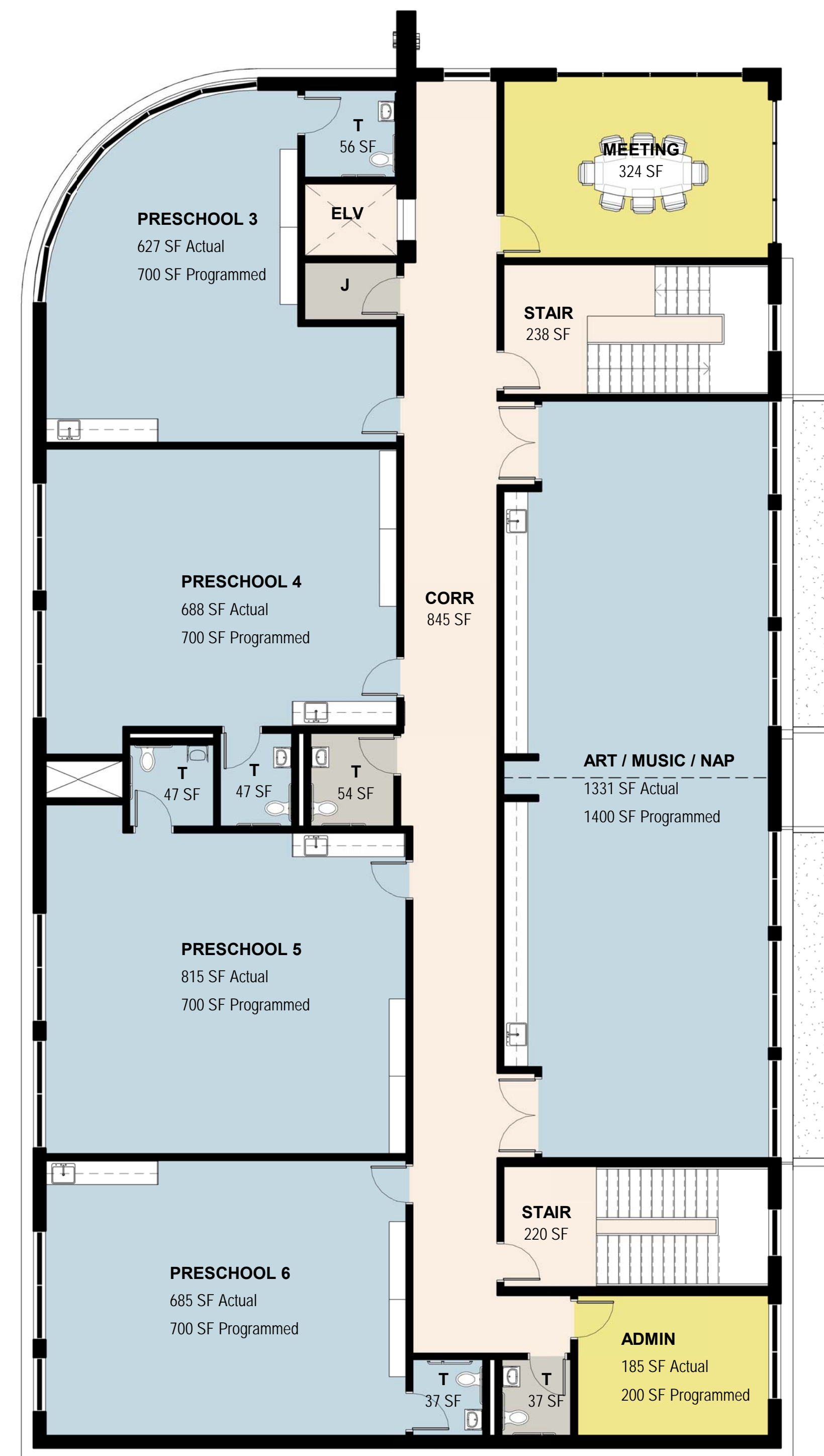
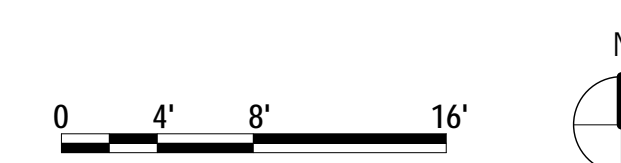




SECOND FLOOR
1/8" = 1'-0"



THIRD FLOOR
1/8" = 1'-0"



b | g | a

1010 Wisconsin Avenue, NW
Suite 400, Washington, DC 20007
T 202.337.0888 | F 202.337.2525
bga@bowiegridley.com | bowiegridley.com

bowie | gridley | architects

No.	Issue-Addendum-Revision	Date

© Copyright 2019 Bowie Gridley Architects PLLC. All rights reserved worldwide.

Children's House

Montessori School
3436 LEE HIGHWAY
ARLINGTON COUNTY, VIRGINIA
BGA # 19007

DATE: 11/22/2019 SCALE: 1/8" = 1'-0"

Floor Plans

SHEET #

A101

W:\Projects\DC\19007 Lee Hwy Childs\Central File\19007 Lee Hwy Childs\BGA-19007-11222019-131-04.rvt