

Children's House

Montessori School

3436 LEE HIGHWAY
ARLINGTON COUNTY, VIRGINIA

Use Permit Set

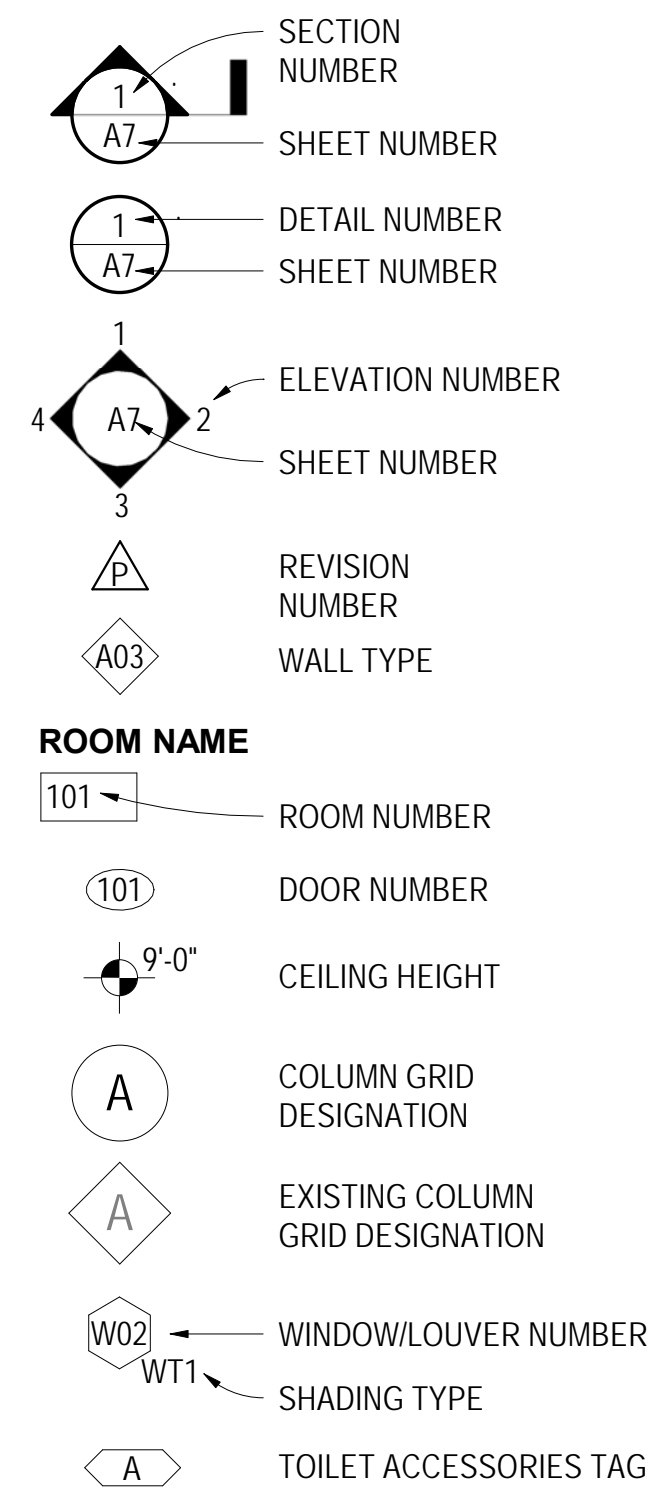


Owner	Architect	Civil Engineer	Landscape Architect	Structural Engineer	MEP Engineer	Traffic
Children's House Montessori School 3436 Lee Highway Arlington County, VA 571.278.0783	Bowie Gridley Architects 1010 Wisconsin Ave. NW, Suite 400 Washington, DC 20007-1178 202.337.0888	Christopher Consultants 9900 Main Street Suite 400 Fairfax, VA 22031 703.273.6820		Linton Engineering, LLC 46090 Lake Center Plaza Potomac Falls, VA 20165 571.323.0320 x121	Aspire Engineering 9401 Lee Highway, Suite 410 Fairfax, VA 22031 703.539.8711 x202	Gorove/Slade Associates, Inc. 1140 Connecticut Ave NW Suite 600 Washington, DC 20036 202.296.8625

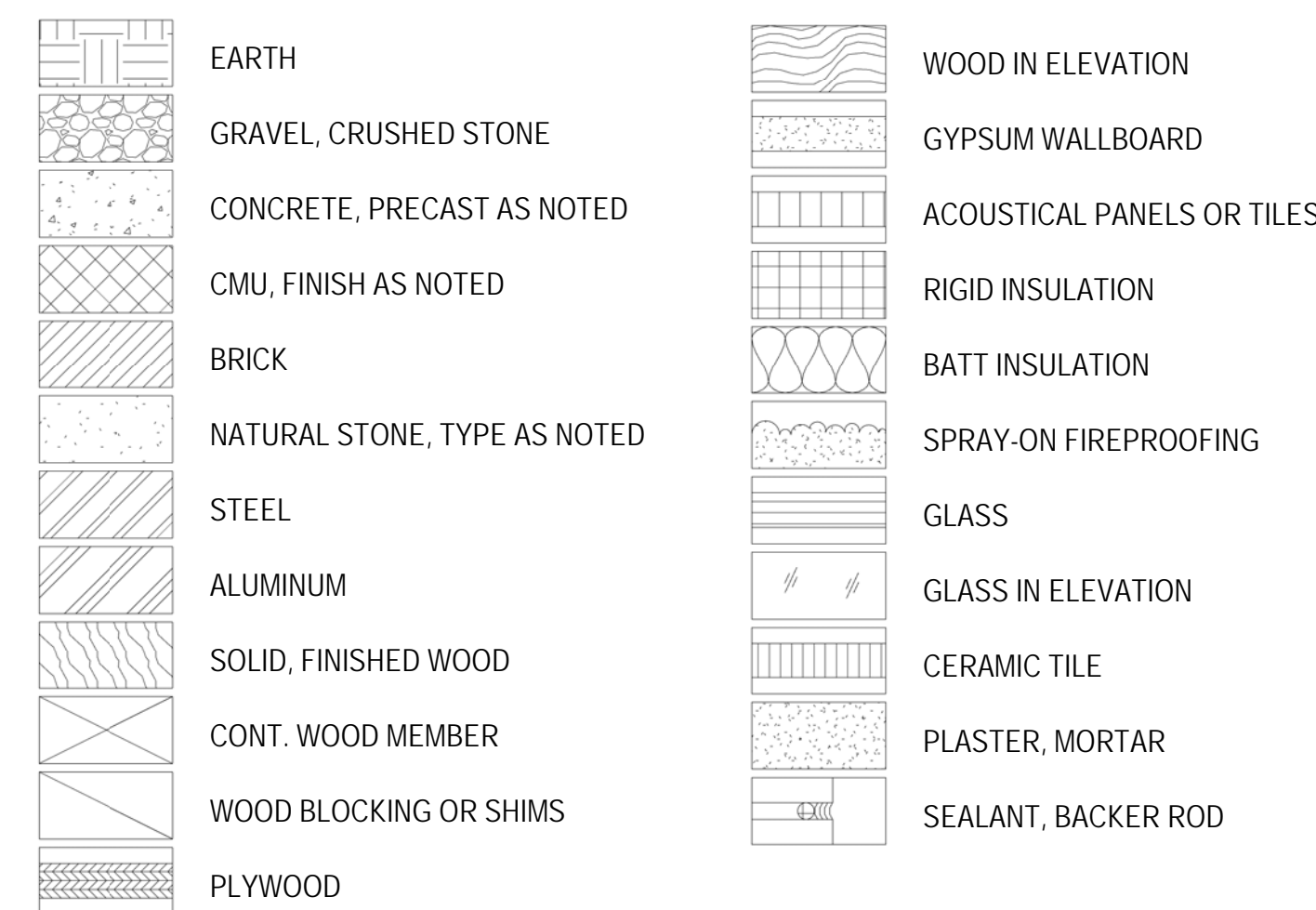
General Notes

- Perform all work in accordance with all applicable codes, rules, and regulations recognized and adopted by the jurisdiction having authority over this project.
- Do not scale drawings. Where dimensions between small scale and detail drawings differ, detail dimensions shall govern. Field verify all dimensions and notify Architect of any discrepancies.
- Perform all work in accordance with the accepted Standards of the Trades. Install all manufactured items in strict accordance with the manufacturer's written instructions and recommendations complete with all plumbing, mechanical and electrical connections as required for a complete installation.
- Items and conditions noted or detailed are applicable and binding to similar conditions on all drawings. For conditions not noted or detailed, Contractor shall provide materials of equal quality and performance to other similar conditions on the job.
- Items shown on the drawings, but not specified are to be furnished and installed by the General Contractor unless noted otherwise. All such items shall be of a quality level consistent with the general quality level of the Contract requirements.
- Field verify existing conditions prior to starting the work. Should the Contractor find, after a visit to the site or during construction, any discrepancies, omissions, ambiguities or conflicts in or among the drawings, or be in doubt as to their meaning, he/she should immediately notify the Architect in writing before proceeding.
- Demolition shall generally be arranged to agree with the accomplishment of work in coordination with the work of other trades. Examine all drawings for additional requirements.
- Where the words "patch", "match", "repair", "replace" and the like are used, special care shall be taken to ensure that colors, textures, and finishes of disturbed areas shall match in all respects. Replace is defined as remove existing and install new including all appropriate electrical connections and with matching or compatible equipment or material as shown, specified, or required for complete installation.
- Patch all holes in walls and floors, and repair or replace all existing items damaged by the work in the area affected by the work whether or not specifically noted on the drawings to be repaired.
- Provide reinforced walls and backup as required for all wall hung or supported items where indicated for items provided by the GC or Owner.
- Contractor shall lay out space in its entirety to check for conformance with the Contract Documents. Notify Architect of any discrepancies.
- All dimensions are to finish face unless otherwise noted.
- All partitions are to extend to the underside of the deck above unless otherwise noted.
- Refer to mechanical, plumbing, and electrical drawings for notes pertaining to their particular trades and field check against any conflicts between drawings.

Symbols



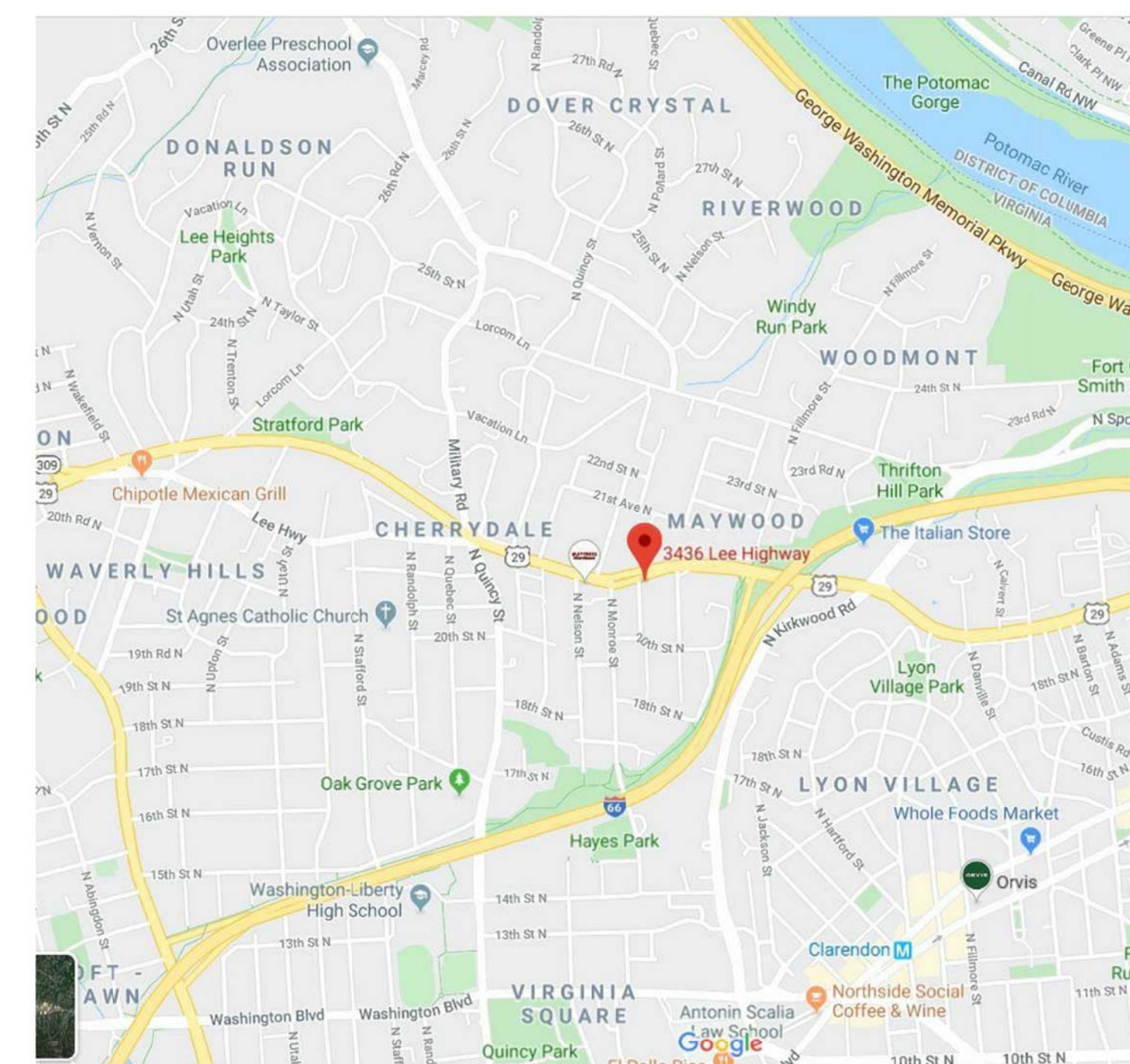
Material Symbology



Index of Drawings

A001	Cover Sheet
C100	Existing Conditions
C101	Plot and Location Plan
A002	Site Plan
A100	Floor Plans
A101	Floor Plans
A200	Elevations
A201	Elevation

Vicinity Map



b | g | a

1010 Wisconsin Avenue, NW
Suite 400, Washington, DC 20007
T 202.337.0888 | F 202.337.2525
bga@bowiegridley.com | bowiegridley.com

bowie | gridley | architects

No.	Issue-Addendum-Revision	Date
© Copyright 2019 Bowie Gridley Architects PLLC. All rights reserved worldwide.		

Children's House

Montessori School
3436 LEE HIGHWAY
ARLINGTON COUNTY, VIRGINIA
BGA # 19007

DATE: 11/22/2019 SCALE: As indicated

SHEET TITLE: Cover Sheet

SHEET #: A001