

Sweet & Sour News



The Bi-Monthly Newsletter of the Cherrydale Citizens Association

The Cherrydale Citizens Association ~ www.cherrydale.net ~ September 2013

Inside This Issue

Feature Articles - p. 1

Dominion Heights Site Plan Amendment Vote, con't p. 19

Bus Stop Site Change Vote

Street Lights Meeting, con't p. 17

Cherrydale Business - p. 2

Rod and Reel Repair

Cherrydale Subway

Community / Social - pp. 3-7

Ice Cream Social Recap,

Upcoming Potluck, Window

Gallery, Business District, Hunter's Park, Cherrydale Baptist Church

Fun/Interest - pp. 8-11

Cherrydale Comics, Recipe,

Gardener's Corner, LEGO

BrickFair, Reasons to Ride ART

Buses, Art Contest Winners

Updates - pp. 13-17

Lee Hwy Undergrounding, Crime,

New Sidewalk, New Police

Officers, New Bus Shelter,

Referrals List, N. 20th St NC,

Lights Near W-L, Oak Grove Park,

Tree Canopy Fund Applications,

Real Estate Data

Caring Neighbors - p. 18

Library & Fire House - p. 21

About the CCA - p. 22

CCA Contacts, Connect with Us,

CCA Membership & Merchandise

Important Dates

September

CCA General Meeting

Wed, 9/25/13

(later date to minimize back-to-school night conflict)

7:30pm at CVFD

3900 Lee Hwy, 2nd fl.

Agenda Items:

- Storm Sewer Capacity
- Restoration Church
- Bus Stop Change VOTE
- Dominion Hts Site Plan Change VOTE

October

Candidates Debate

Wed, 10/16/13

7:30pm at CVFD

Newsletter Items Due

Fri, 10/18/13 to:

secretary@cherrydale.net

Potluck & Share-Your-Talents Night

Sat, 10/19/13

7:30pm at CVFD

November

CCA General Meeting

Wed, 11/20/13

7:30pm at CVFD

Dominion Heights Site Plan Amendment (Vote at 9/25 CCA Mtg)

by Maureen Ross

There will be a presentation at our September 25 CCA meeting whether to endorse a site plan amendment to Dominion Heights allowing a dental practice to purchase about 65% of the ground floor retail area. This area was originally planned for commercial, and it is well parked. However it is technically underparked for a medical related practice.

(continued p. 19)

Dominion Heights Bus Stop Site Change (Vote at 9/25 CCA Mtg)

by Maureen Ross

There is a debate about where a bus should stop heading west on Lee Hwy should go. Originally, there was a stop on the corner of Lee and N. Monroe. It was moved to N. Lincoln during construction of Dominion Hts, but was supposed to move back after completion. According to the site plan, there should be 2-3 parking spaces there, too. However, County considered removing the parking spaces (which Dominion Hts retail objects to) and which violates their site plan. We suggested moving the stop to Car World, which objects. The current site at N. Lincoln is a problem for condo owners who complain that riders take short cuts through their parking lot.

We will discuss this at the September 25 CCA Meeting. Come to listen and discuss this concern. We might vote on it.

Street Lights Meeting

by Gerard Martin and Colleen Marzec

Some 18th street residents have recently gone into a frenzy -- debates, protest letters, and even an act of civil disobedience -- to contest the color (too white) and the strength (too intense) of the new lights installed in the context of the otherwise very successful street renovation in 2011. The original street lighting on 18th between Quincy and Nelson was a warm, low intense orange (still very present in Arlington), that

(continued p. 17)

CHERRYDALE BUSINESS

Rod and Reel Repair (703-528-3022; 3612 Lee Hwy)

by Lacey Wootton



Phil Evans has run his Rod and Reel Repair shop—and lived above it with his wife, Pearl—since 1993. The shop looks quiet and is only open part of the week—but Phil’s repair skills draw fishermen from “Front Royal to the Bay Bridge and Gaithersburg to Fredericksburg,” he says. “There’s a lot of fishermen around.”

Phil has lived in Arlington since he was nine years old; his family moved from Scranton when the anthracite coal ran out and his father needed to find other work. Later, he worked with computers for the city of Alexandria but was, he says, “chased out of the computer world.” He then went to work for Herman’s Sporting Goods in DC but left to start his own rod and reel repair shop. For a while, that shop was located near Bergmann’s Cleaners in DC, but he lost the location when the Gallery Place Metro was developed, and he eventually moved his business to Cherrydale.

After so many years in Cherrydale, Phil has seen quite a few changes. His own business location used to be a shoe repair shop; he says that business’s owner was a woman who had a grape arbor in the backyard and crushed grapes for her own wine. Now, Phil says, he’s doing a good job of raising dirt.

Overall, Phil thinks the changes in Arlington and Cherrydale are “wonderful,” and he’s happy to see how prosperous the neighborhood has become. He recognizes, though, that a smaller, older building like the one he lives and works in might undergo changes some day.

Subway in Cherrydale (www.subway.com; 3800 Lee Hwy)

by Meg Miller Rydzewski



Cherrydale Subway owner/operator Sujata (Sue) Kapoor was born and raised in New Delhi, India. She moved to Northern Virginia in 1985. Prior to becoming a Subway franchisee, she had worked for a consulting civil engineering firm in Fairfax for about twenty years. When they downsized, Sue decided to become a Subway franchisee. She chose the Subway franchise over other concepts because it offers healthy food options and is one of the most successful franchises in the world.

Sue owns two other Subway locations, one in Woodbridge, Virginia and another in Fairfax. She decided to open a third in Cherrydale since it is nestled in a nice neighborhood and within close proximity to great schools and businesses. 3800 Lofts was the only site available at that time and the Subway office approved it to be a viable site for the franchise.

"I really like the Cherrydale neighborhood, especially because it seems to be so close knit and quiet. It is so close to Washington, DC and other popular areas in Arlington, without the hustle bustle."

As a business owner, Sue definitely would like to see major improvements towards parking along the Cherrydale Business District stretch. Her business here has not been doing as she expected, as traffic passing her on Lee Highway is not aware of the retail parking available in the back of the store. Adding visible parking spots along the stretch would help her as well as the other businesses that have opened up in the Lofts, as would improvements towards walking and biking in the area.

"I definitely would be very much interested in getting together with the other business owners in the Cherrydale Commercial District to help with encouraging more retail traffic," she says.



COMMUNITY / SOCIAL



Ice Cream Social on July 17: Real Fun, Real Tasty!



by Debra A. Berke, CCA Social Coordinator



Over 90 people came to the historic fire station for an old time ice cream social. We topped our cones with sprinkles, cherries, nuts, whipped cream, and chocolate. The kids had a great time eating and being in the historic firestation. Our scoopers were local business owners, Marzia Spanta from the Kite Runner café and Marcia Bowlds of McEneaney Associates.

Door prizes are becoming our signature thing at the Cherrydale social events. For the ice cream social the door prizes were provided by our Treasurer and "Store" manager Katherine Christensen. The fantastic door prizes included T shirts, travel mugs, and recyclable shopping bags. We had a chance to buy the newly released Cherrydale car magnet. People ate dessert, took a break from the heat, and socialized.

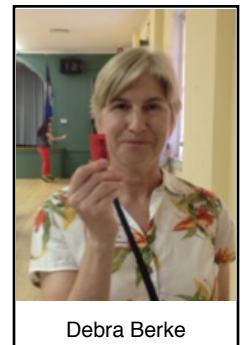
Save the Date: Potluck & "Share Your Talents" Night: October 19! 6pm-8:30pm at the Historic Fire Dept (3900 Lee Hwy, 2nd floor*)

by Debra A. Berke, CCA Social Coordinator

Do you paint? Sing? Bake? Perform? Write? Take photographs? Knit? Have a band? Garden? Act? Come meet your talented neighbors and eat the fruits of their labor. We will have a potluck meal, a section for people to display their crafts and wares, and an open mic.

The talent sharing is a way to spark interest in the brand new Cherrydale Window Gallery. For me, I have started making small mosaics again, with the idea of selling a few as gifts through the unique opportunity we have at showcase our crafts. Perhaps at the potluck or at the Cherrydale Window Gallery you will find a perfect handmade gifts for that somebody on your Christmas or Hanukkah list.

Our beloved tradition of having door prizes at our social events, will of course happen on the October 18 potluck. I will ask people to donate samples of their work and these will be the door prizes. This alone should be an incentive to come to the potluck. (continued...)



Debra Berke

PC Help

Want help with setting up, networking, upgrading, fixing, or just using your new or old PC?

Affordable, personalized assistance.
Evenings and weekends. Your home or office.

Ron Hicks DBA Systems That Work

Email: ronhicks@systems-that-work.org

Website: www.systems-that-work.org
H/O: 703.528.1009 Cell: 571.217.9949

Arlington Chamber of Commerce

R & M Cleaning Services

Reliable * Experienced
Good References * Flexible Scheduling
Reasonable Rates



WE BRING OUR OWN EQUIPMENT

Free In-home Estimate
Weekly, Bi-weekly, Monthly or Occasional
Move-in or Move-out Office

Call Maryen or Raul
703.321.5335

COMMUNITY / SOCIAL

A formal invitation will be coming out on EVITE, so watch the listserv. Drinks (non alcoholic) and paper goods will be provided. Potluck assignments are as follows:

- People with last names starting with A-H: bring dessert
- People with last names starting with I-S: bring a salads, appetizer, or vegetables enough to serve 6
- People with last names starting with T-Z: main dish enough to serve 6, put note with it to show if it has meat or is vegetarian.

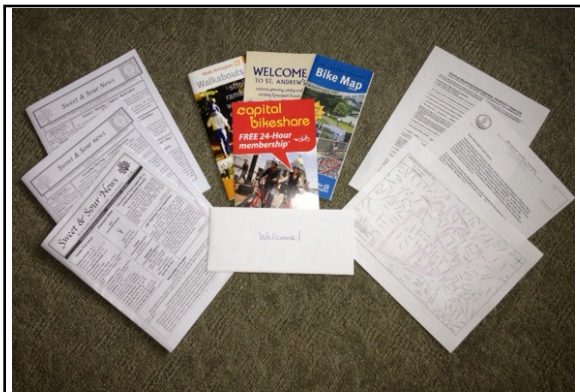
***Please note there is only stairway access to the second floor of the historic fire station.**

Welcome Wagon

by Amy Wheelock

Welcome New Neighbors! The CCA Welcome Wagon delivers welcome packets to new residents and businesses to our community. Packets include information on Cherrydale, vehicle registration information, maps of Arlington, information on BikeShare, instructions on how to sign up for the listserv, coupons for local services, and helpful links from Arlington County.

Many thanks to those who let me know about new neighbors! We delivered five welcome packets in the last two months. If you know someone who has recently moved to Cherrydale (renters or homeowners) or if you'd like the welcome packet to include a brochure or coupon for your business, please send me an email at welcome-wagon@cherrydale.net.



Welcome Packet contents

New! Cherrydale Window Gallery

by Maureen Ross

What a fantastic group of artists, writers and volunteers (and some were all three in one). In the third week of July, I put out the word we were setting up a Cherrydale/Maywood artists and writers display at the former Cherrydale Auto Parts corner store on Lee Hwy and N. Lincoln Street. I just asked people to show up at 3pm the following Tuesday and a wonderful team emerged. We were finished in the three hours allotted!

The volunteers who set the displays were neighbors who had never met each other but worked quickly, collaboratively and generously. Greg Embree recleaned the windows and got the gummy glue off. Jackie Afram gave us big rolls of paper to line the window display (which make a huge difference as cleaning the sills was just impossible.) Karen Grumbles set out the lining and much of the displays. George Coling cleaned and vacuumed. Tom Hone came by and held the ladder as we hung displays. Christi Pina lent us display things like tables and art display wracks. I can't even remember who brought the easel. Tracy Price was a cleaner and display organizer. Tom Korn came by with muscle and creative spark. In fact each and every volunteer provided both grunt work and artistry to set out the displays in as attractive manner as possible in a short time with no supplies but what we thought to bring. (continued...)



Tom Korn, Greg Embree, Maureen Ross, George Coling, Tracy Price, and Christa Pino

COMMUNITY / SOCIAL



We only have permission for window display of art and books created by Cherrydale and Maywood residents. The store is not electrified, and not open for purchasing or browsing. We are simply making good use of big, empty window space. Next to each book or art is a note on the creator and perhaps how one can buy the item if it is for sale (some of the displayed work can be bought at La Maison, Company Flowers, or Ivy Welding).

The next time we change displays will be early September after Labor Day. We will probably have 30 artists displaying their work by then. I will keep you posted. If you want to show your book, poem, photo, art or even a photo of you playing an instrument (and you would like to be hired to play it), let me know (president@cherrydale.net). You will need to add a 6x6 inch bio with information on how to reach you or purchase the item if it is for sale.

Retail in the 'Cherrydale Business District'

by Maureen Ross

The Cherrydale Window Gallery mentioned in the previous article is one step in a larger vision for the 'Cherrydale Business District' (Lee Highway between N. Quincy Street and the I-66 overpass). The window displays create a destination point. And soon, just a few blocks further east, we expect another restaurant (or something) where Bono films was. On the other side, just one block west, are La Maison and Dunkin Donuts. Across the street are the Lee Heights stores. We should have at least one store or restaurant at Dominion Heights.

Every block on either side of Lee Hwy will be a destination point worth visiting. Eventually we should see greater pedestrian traffic because there is REASON for the walk. Perhaps our dream of a united retail consortium will finally become a reality and, with that, some funds/effort to keep Lee Hwy not just clean and weed free but attractive, interesting and safe.

Congratulations to Maureen Ross!

by Meg Miller Rydzewski



Congratulations to Maureen Ross on the occasion of her official adoption of two wonderful daughters, Matsu (left) and Kandy (right) Ross.

Maureen has spent many weeks in Colombia finalizing arrangements and will soon return.

Please extend your welcome when you have the opportunity!

15% off in
September for
Cherrydalers -
code
NEIGHBORS



PALM TEES

COMFY CLOTHING FOR YOUR LITTLE PEOPLE

Shop at: PalmTeesClothing.etsy.com

jamie brys
PHOTOGRAPHY



571-335-6058

jamie@jamiebrysphotography.com

COMMUNITY / SOCIAL

Hunter's Park Senior Residence: A Little U.N. in our Midst

by Teri Murphy

Turkey, Greece, Peru, Haiti, Laos, and France are among the many origins of the residents of Hunter's Park, a low-income senior residence across Lee Highway from Safeway.

An immaculately manicured roof deck garden with bounteous potted tomatoes was one of the highlights on a recent tour for Cherrydale residents—along with a sunny community room and ample common kitchen. Activities manager Jennifer Cavaliere organizes a full schedule of exercise classes, luncheons, and outings. A book club recently finished the biography of Sonya Maier. Sami Hadad of Palestine said his favorite event was a series of readings by a class of writers from GWU; Hunters Park residents had a chance to critique the students' work and then tell stories from their own lives. Residents from about half the 74 units turn out for activities – with the biggest attendance at Thanksgiving dinner.

The building also receives services from the community. Arlington Food Assistance Center distributes boxed lunches and canned goods. The Fenwick Foundation donates tickets to performances and other events. There is ample covered parking, and the several residents with cars sometimes give rides to those without. But transportation assistance is often needed.

The units are small. All one bedrooms, their full-size kitchens and baths make for minimal bed and living rooms. But some residents arrive with no furniture and others find a way to adjust. Sami told me, "I once met a Franciscan monk teaching philosophy of Sufism in Syria. He lived well with a bed, table, and chair, and that was a wise man."

Hunters Park was built as a public/private partnership between Arlington county and AHC. According to AHC board member Ginger Briggs Brown, this project is one of the most financially solid in the mid-Atlantic region, as a loan by the county continues to earn interest while the mattress store on the first floor pays rent. Because of federal dollars in the project, residency is open to all those over 62 who meet income limits. Most residents lived previously in Northern Virginia and still have some family connections. But others come from across the United States and do not. A household income limit of \$51,600 includes 2% of assets. Rent at that income is \$1,122, and it slides down to \$517 for those with the minimum income of \$15,510, including any Section 8 or other assistance payments. Currently there is no waiting list, and one unit is available.

Sami, a self-described extrovert, says, "Everyone looks after each other regardless of color or religion, but we're like an island, seldom seeing other residents of the neighborhood. I wish we had more programs like that play reading. I love to meet new people."

Apparently, the one notable demarcation is between the Spanish and English speakers. Only one resident, Eli Morales of Puerto Rico, speaks both languages, so Jennifer does a lot of translating. She helped me converse with two couples from Colombia—the Barons married 52 years and the Arias married 58 years. Luis Alfonso Arias is the volunteer who has beautified the roof garden. The gregarious couples told me everyone gets along so well because Colombians are a happy people, their campesino ancestors working hard and being world champion salsa dancers.

left: Activities manager Jennifer Cavaliere stands between the Arias and the Barons of Colombia; right: Sami Hadid originally from Palestine and Eli Morales from Puerto Rico



COMMUNITY / SOCIAL

Churches of Cherrydale (Pt 2): Cherrydale Baptist Church - 100 Years in Cherrydale

by Andy Murphy

In 1913, the first members of the Cherrydale Baptist Church had to carry lanterns to evening services because Randolph Street, its original location, had no street lights. Today, that site is home to St Agnes Catholic Church.



In 1959, CBC moved to the grand, 3-storey, Southern Colonial style building at Military & Lorcum, where it is now the largest church in Arlington, regularly drawing 750 worshippers between its two Sunday services (9:15 and 11:00). The building, which has been renovated and added to over the years, has an airy atrium foyer, a spacious sanctuary equipped with high-tech audio-visual aids, and dozens of meeting rooms for diverse spiritual and community activities. Among the children's rooms, one is an allergen-free zone with no peanuts allowed.

Despite its size, CBC has a homey feel, some folks dressed formally, others in shorts and flip flops, all attentive to the day's salvation-based message from

the readers and the preacher. On the Sunday my wife and I attended, the message was from Jeremiah: Avoid extremes, neither judging harshly those who sin nor abetting their behavior. Pastor Tom self-effacingly expanded on the teaching with real-life references, causing many heads to nod in agreement.

The music is mostly soft, contemporary, worship style and the post-service social hour buzzes. The Sunday we visited, most people were in their 30s or 40s. Many long-time members travel from throughout the Northern Virginia region.

When I visited during the week, 200 children were clearly enjoying Vacation Bible School next to the room where 25 seniors were exercising at a Parkinson's support group. In the kitchen, volunteers were readying the food pantry for distribution to the needy. Kendall Lord, head of the music ministry, told of the church's other food-related charity work, including meals-on-wheels for shut-ins and visits to homeless shelters.

Steve King, now in his 30th year as pastor, takes pride in the widespread missionary work CBC sponsors both in the U.S. and in a dozen other countries. The Spanish language ministry is active through the Casa Chirilagua movement, and there's a weekly Bible study in Chinese. Unique in our entire region, the church also offers a weekly service in Thai. For the last 60 years, the pastor's sermon has been broadcast on local radio. It's currently on WFX (AM 1220).

Pastor King invites anyone interested in local history to come see the displays, to celebrate Cherrydale's past, and to "look to the future by joining us in celebrating our 100th anniversary October 12-13." Centennials rock!



www.cherrydale.org 3910 Lorcum Lane, Arlington, VA 703-525-8210

Do you know of neighbors who are making a difference in our community and deserve a thumbs-up? The new 'CARING NEIGHBORS' section of the newsletter is the place to do it!

Send an email to: secretary@cherrydale.net

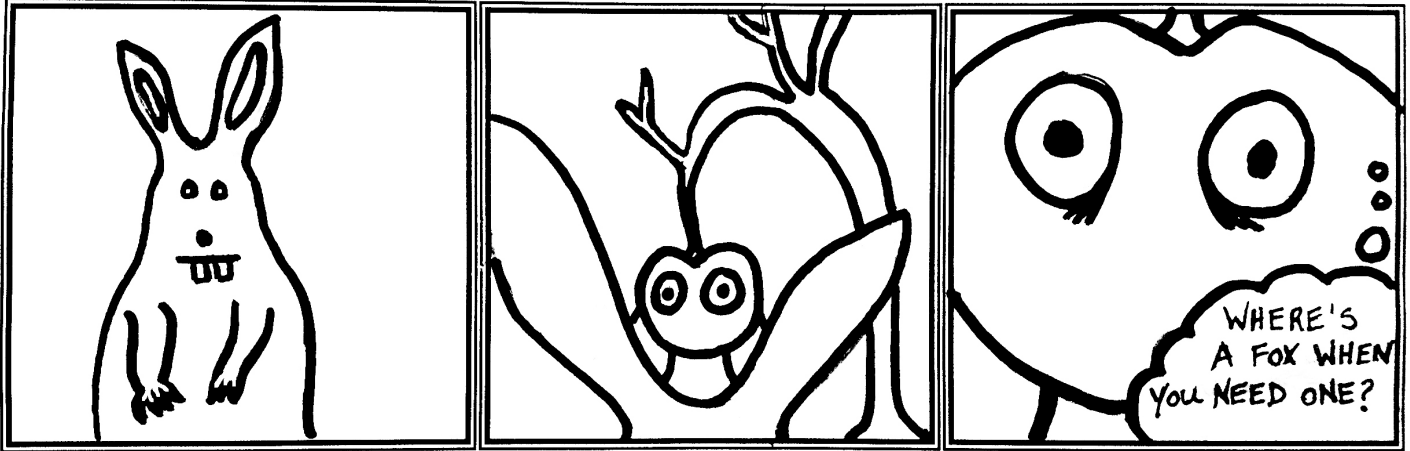


FUN / INTEREST

Cherrydale Comics:

A BOWL OF CHERRIES

by Becket Rydzewski



Do you want your comic to appear here? Read how: <http://www.cherrydale.net/cherrydale-comics.html>

Sweet & Sour Recipes:

Cherry Vanilla Ice Cream

by Meg Miller Rydzewski

I use a 2-quart Cuisinart automatic ice cream maker to make this. The recipe has lower fat content since I substitute half & half for heavy cream.

Ingredients

- 2-1/2 cups 1% milk
- 1-1/8 cups (plus 2 tablespoons) granulated sugar
- 2 cups half & half

- 1-1/2 tablespoons pure vanilla extract
- 1 cup pitted, quartered cherries
- 2 tablespoons water

Instructions

1. In a medium mixing bowl, combine milk and granulated sugar until the sugar is dissolved. Add the half & half and vanilla and stir.
2. In a sauce pan, cook the cherries with 2 tbsp of water and 2 tbsp of sugar until soft. Let cool.

3. Strain the cherries and combine them with the contents of the mixing bowl.
4. Pour the mixture into ice cream maker's freezer bowl and mix until thickened, about 20-25 min. It should have a soft, creamy texture.

For firmer consistency, transfer to an airtight container and place in freezer for about 2 hours. Remove from freezer about 15 minutes before serving.



20% Off

First Time Clients Only
Offer Expires September 2013

www.QGPrint.com

Quality Graphics & Printing, Inc.

23430 Rock Haven Way, Suite 122 | Dulles, VA 20166

703.661.6060 Telephone | 703.661.6990 Facsimile

JACKIE McLAUGHLIN
REALTOR®

Lifetime Member NVAR Million \$ Club
Lifetime Top Producer
Certified Retirement-Living Specialist

Arlington Office
4600 Lee Highway
Arlington, VA 22207

Office: 703-284-9321 • Cell: 703-405-2667
Home Office: 703-241-2840
Jackie.McLaughlin@LongandFoster.com



FUN / INTEREST

Gardener's Corner:

Fall Lawn Renovation the Organic Way

by Danylo Kosovych, Owner of Cherrydale-based Organic Edible Gardens LLC, www.oegardens.com

Fall, in general, is the best time of the year for planting. With temperatures slowly cooling down and an increase in precipitation, newly installed plants have a good opportunity to establish themselves. When it comes to the month of September specifically, this is a good time for planting cool weather annuals, whether they are petunias or pansies or vegetables like lettuces, arugula, spinach, beets and carrots. Perennials, trees and shrubs can be planted now but there is no hurry as they can be planted as late as December as long as the ground is not frozen. There is one family of plants that have a much smaller window of opportunity; their optimum period for establishment in the month of September.



I am talking about our prized and sought after turf grasses.

Organic lawn care means no herbicides or synthetic fertilizers. How do you manage weeds without selective herbicides? You might ask. You can burn them, or technically heat-sterilize them, with a specially made tool designed for organic agriculture or use an acetic acid (vinegar) based organic herbicide. Both pretty much do the same thing, burn the leaves. Following a sufficient weed suppression schedule you should apply any necessary nutrients and adjust the pH of the soil as advised by a simple chemical soil analysis. An organically fertile soil requires organic matter; it is the food that the microbes eat in order to produce nutrients for the plants. Most lawn soils, especially chemically treated ones have low percentages of organic matter. In order to improve this, apply a top-dressing of well matured compost. Follow this with an aeration to improve soil porosity, work the compost into the soil and to provide a good seed bed for the grass seed. Seed selection is important as certain varieties are best adapted to our climate.

A short time later, after a little help from Mother Nature in the form of rain, you can have a more drought tolerant, lush green lawn for your children to play in without the health risks of synthetic pesticides or contamination of the watershed.



organic lawn care
ecological landscape maintenance
sustainable landscape design & installation

571.282.1724
oegardens.com

Mention this ad and receive 10% off
an annual maintenance contract!

Cherrydale Neighbors Exhibited At Chantilly LEGO BrickFair

by Sam Grimmelbein, Junior at Washington-Lee High School
On August 1st through 4th, local Cherrydalers Ken Rice, Magnus Lauglo, and Sam Grimmelbein exhibited LEGO "MOCs", or "My-Own-Creations" at the sixth annual BrickFair LEGO fan festival in Chantilly, Virginia. The event, held at the Dulles Expo Center, housed thousands of these home-made creations, as well as just over 1000 exhibitors of all ages from across the world. (con't)

FUN / INTEREST

The LEGO “MOCs” displayed covered all sorts of themes, from Castle to Space, City to Movies, and Zombies to Birds, to name a few. Popular collaborative displays this year included the “Pharaoh’s Labyrinth”, “LEGO Civil War”, and several cities. Ken Rice displayed MOCs in both the Labyrinth and Civil War, Magnus Lauglo displayed in the Military theme, and Sam Grimmelbein in Castle/Pirates. Many of the exhibitors spent months building their creations.

Closed to the public August 1st and 2nd, exhibitors were given days to set up, meet and greet, play games, build, shop, take pictures, and attend seminars. These AFOL- (Adult Fan of LEGO) led discussions covered a wide array of topics in the LEGO world, from building tricks to technological assistance to even direct Q&A with representatives from The LEGO Group. Vendors from across the country made use of the fan concentration to offer LEGO goods, such as custom-made parts, kits, and shirts. (continued on next page)

Open to the public Saturday August 3rd and Sunday August 4th kids, adults, and families of all sorts came to view MOCs and shop at the vendors. Exhibitors spent the day discussing what they have built, keeping conversation with adults while having a watchful look on wide-eyed kids below. Other activities offered to visitors included frequent Bingo tournaments, offering all sorts of LEGO prizes, “Guestimate” games holding a reward of a jar of LEGO bricks, and a “Stay and Play” area, in which the kids could keep busy.

BrickFair truly is a summer hot-spot worth checking out, and is a must-visit event for LEGO fans of all ages. BrickFair travels to four states over the year: Virginia, Alabama, New Hampshire, and New Jersey. For more information: www.brickfair.com



Four Reasons to Ride ART Buses

by Grayson Fontaine, Junior at Wakefield High School

Living in Cherrydale, it is often difficult for me to get to my school, Wakefield, over in south Arlington. There are the free school buses to and from the school and carpooling is an option, but I have found that the easiest way to get around Arlington is by ART bus. There are four reasons I would recommend ART buses over all other means of transportation.

The first reason to ride ART buses is the amount of stops all over the county. Most ART bus routes stem from the Ballston Metro stop and then branch out to the north and south.

The second reason is the price. The fare for adults is \$1.50 but only \$0.75 for students. The fare can be paid with cash but it isn't very convenient to carry so much change in your pocket. This problem is solved by the convenient ART bus iRide tokens that are sold at the Ballston Metro. Also, ART buses accept Smartrip cards, which can be used for the Metro Bus and train system. Soon, special student ART bus Smartrip cards will be made available to all students, giving them another way to access discounted bus fares.

The third reason to ride ART buses is environmental. The newest ART buses are hybrids. They are powered electrically from batteries which are charged by compressed natural gas when they run low. This process results in lower emissions and higher fuel mileage, and is much quieter than traditional diesel buses.

The final reason riding an ART bus is a good option for getting around Arlington is the convenience of it all. If you ride the bike to an ART bus stop, you can attach it to the front of the bus for free. Also, it is easy for physically disabled people and senior citizens to get on the bus, with its retractable ramps.

Riding the ART bus is a good option for everybody, from students to parents to senior citizens. You can learn more about the ART bus on the website (<http://www.arlingtontransit.com/>).

FUN / INTEREST

Enter Our Cherrydale Comics Competition!

Submit your G-rated, Cherrydale-themed comic strip in a 3-square black and white format to secretary@cherrydale.net by the third Friday of Feb, Apr, Jun, Aug, Oct and Dec for the following month's edition. The best submission will be printed in the newsletter and all will appear on our website here: <http://www.cherrydale.net/cherrydale-comics.html> (see link for a template, more info and to view past submissions).

Cherrydale Teens Win County ART Art Contests

by Meg Miller Rydzewski



Have you seen this bus around Arlington? It was designed by Saint Agnes 8th grader, Annemarie Dougherty, who won the County's ARTists for PAL bus design competition this summer. "I have been taking art in school for eight years," she says, "but have been taking weekly classes with the Arlington Artists' Alliance for about three years. This is the first major art competition that I have won, but I came second in a diocesan art competition in 2012. Previously I entered in a doodle for Google contest and a national Christmas one, with no luck."

Annemarie says her favorite medium is acrylic paint because brushes are easier to keep clean than with oil pain, and acrylic dries faster. "It was a surprise winning with a design I did in marker since I never use markers." She enjoys painting images from National Geographic magazine and sketching portraits.

And coming this month: a new SmarTrip card for students, designed by Washington-Lee High School freshman Daniel Grumbles. According to Arlington Transit, the Student iRide SmarTrip card lets teens ride ART buses for a discounted fare of 75 cents. The card also works on Metrobus, Metrorail and other regional bus systems that accept SmarTrip. The student discount only applies to ART. The card Daniel designed for the competition last winter has images that he drew of the ART bus, Metro train, and Metro bus.

"I have taken a couple of classes in different day camps during the summertime and took art in school," he



says. "Now I mostly just doodle every now and then. The only competition I have entered in and won was through the Reflections Program at school." Daniel's favorite medium is pen or pencil drawings because he likes the simplicity. He doesn't enjoy drawing people because "whenever I do, they end up looking like horrible experiments gone wrong." He does like drawing things in detail and likes modern art. In the last couple of years, he has been tinkering with graphic design programs.

New!!

Get A Colorful Cherrydale Car Magnet - Just \$3!



Order Yours Using the Form on the Back Page

John Plank Real Estate Services, Inc.
 Long & Foster Real Estate
 john.plank@longandfoster.com
 (703) 528-5646



You Deserve The Best!

Over the last 20 years, no other agent has successfully listed and sold more homes in and around Arlington than John Plank.

- #1 Sales Agent for 20+ years
- Over 1,500 Homes Sold
- Over 25 Years Full-Time Real Estate Experience
- BSBA Degree, Real Estate Investment & Finance
- Licensed in VA, DC & MD



www.johnsellsarlington.com

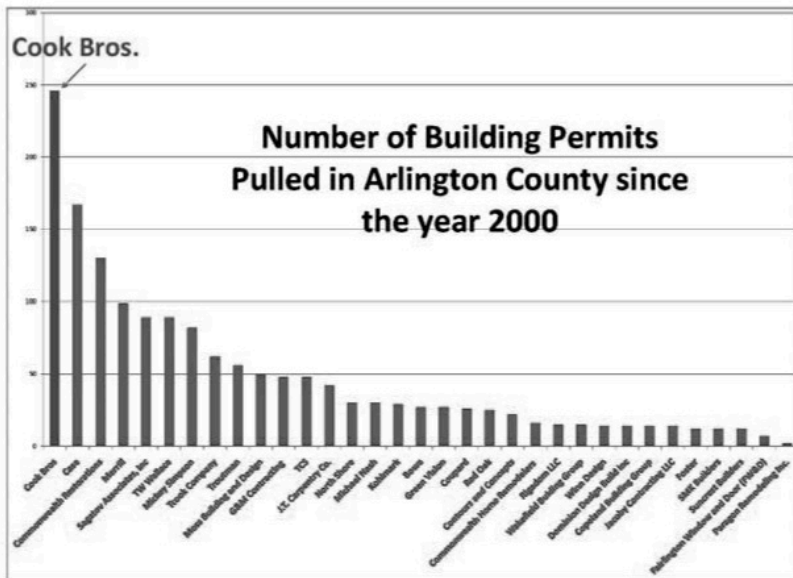


You Don't Have to Interview the #1 Remodeler in Arlington... But...

Why Wouldn't You?

For a larger Graph image and more information about the Graph, visit our website at

www.CookBros.org/CherrydaleGraph



UPDATES

Lee Highway Undergrounding Update

by Michael Collins, P.E., Engineering Bureau Chief, Arlington County (703-228-6505)

The work to convert Dominion Virginia Power (DVP) services to the new underground system continues and is now expected to be complete in September 2013. There will be scheduled power outages as they transfer over, and the affected properties will be forewarned by DVP.

After the services transfers are completed in September, the other utilities (Verizon, Comcast, and Arlington's Transportation Engineering) will transfer their services off of the pole, at which time DVP will have to return to remove the poles. All of the affected utilities met for our regular monthly meeting August 22, and the schedule remains on track to have the poles removed by the end of the year.

Once the poles have been removed, Arlington will proceed with streetscape improvements from Oakland to the Five Points intersection in the Spring & Summer of 2014. The County will look to expedite the improvements in front of the Bromptons development in order provide the on-street parking for that block which has been planned for. We are targeting April (when asphalt becomes available after the winter months) to have those parking spaces in service.

Note from the CCA: We will plan a sidewalk celebration/ribbon cutting in the spring when the project and beautifications are complete. We would love volunteers to work on the celebration committee. More information will follow.

Crime in Cherrydale

by Maureen Ross

Safety, it turns out, was the highest priority value in choosing Cherrydale for a home, according to our neighborhood survey. This is just a reminder that though Cherrydale is a remarkably safe neighborhood, it is not crime free. Some times we are lulled into carelessness, forgetting to lock our shed, garages, car doors, sometimes even houses. I've done this myself. Most of the time, nothing is stolen.

But thieves know this, and sometimes they will walk the streets checking 200 car doors a night for spare change and quick heists. Vans may roam looking for open garages with bikes visible. Maywood had two bike thefts last month and everyone heard about the 15 Prius tire slashings July 22nd, a Sunday into a Monday morning time frame. According to our new neighborhood liaison officer Adam Cridor, "it appears most of the Prius tire slashings occurred on between 0200-0500 hours and most owners discovered their vehicles had been damaged when they were heading into work, 0800-0900 hours."

A few Cherrydalers have sent in leads to Officer Cridor. Keep your eyes open and your doors locked especially at night. If cherrydale gets a reputation for not being easy, it will help our safety factor.

New Sidewalk Coming to Old Dominion Drive (from the new Cherrydale Fire House to N. Thomas Street)

by Elizabeth Diggs, Capital Projects Management Coordinator

Department of Environmental Services - Division of Transportation - Arlington County Government

This is a new project to complete a sidewalk on Old Dominion Drive from the new Cherrydale Fire House, where the sidewalk currently ends, to N. Thomas Street. The project consists of new curb, gutter, sidewalk, street lights and trees. A study is currently underway for the feasibility of a crosswalk at N. Thomas Street and to correct the uncontrolled drainage from N. Stafford Street.

The project is currently funded for design only and staff will seek funding for construction at a later time. To follow the progress go to the County webpage at www.arlingtonva.us and search Captrack, Old Dominion Drive, Missing Link. If you have any questions or concerns, please contact Elizabeth Diggs at ediggs@arlingtonva.us.

UPDATES

New Police Officers; Reminder to Report Incidents

by Captain Karen Herchenroder, Arlington County Police Dept., First District Commander

It is my pleasure to announce and welcome the newest team members: Sergeant Alan Lowrey has taken Sgt. Eliseo Pilco's position, who was promoted to Lieutenant; Officer Adam Crider has replaced Officer Ashley Robinson, who was promoted to Corporal; and Officer Richard Kelly has taken Officer Adam St. John's position, who has returned to the Patrol Section. They will be reaching out to the civic associations to introduce themselves.

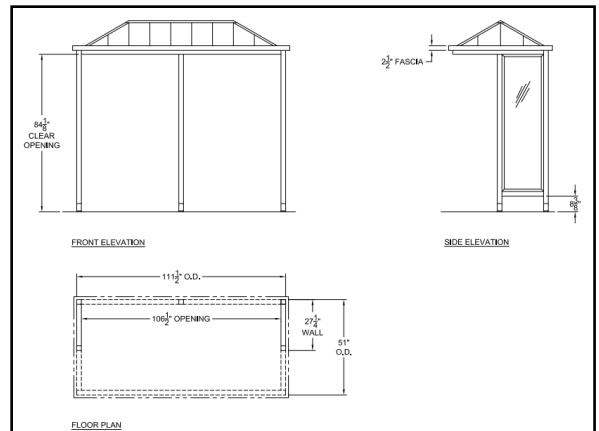
Just a friendly reminder, if you see something that does not look right, call the police non-emergency number at 703-558-2222 **at the time of the incident**. Reporting it online, or on listservs after the fact makes it much harder for us to follow up. Please provide as much identifying information as possible, including descriptions of individuals and vehicles.

New Bus Shelter at N. Monroe Street and Lee Highway

by Oleg Kotov, Bus Stop Program Manager, Arlington Division of Transportation, Transit Bureau

County staff is currently finalizing the easement for construction of a bus shelter along the Dominion Virginia Power substation wall on eastbound Lee Highway and N. Monroe Street. We anticipate the final easement approval in September and shelter (and landscaping) installation to take place in October.

Below (left) is a photo of a bus shelter on Lee Highway and N. Stafford Street. This is representative of the model/type of shelter that we'll be installing at the substation, except the new shelter will not have the back wall, only sidewalls. We had to make this custom change because the shelter will be installed directly against the brick substation wall and it would be impossible to wash/maintain the back of the rear glass panels. The shelter is sturdy, simple and matches the design of all the other new shelters that we've been installing in Cherrydale and throughout the County. Below (right) is a technical drawing of the actual shelter that we'll be installing.



Cherrydale Referrals List

by Meg Miller Rydzewski

It seems as though having the links embedded in the yahoogroups site isn't working well for people. There simply isn't the kind of participation I'd hoped for. So, I've set up a password protected page on our website. The only thing you need to know is the password. I've circulated this on the listserv but if you don't have access to that, send me an email (secretary@cherrydale.net) and I'll tell you the password (CCA members only, please). The page: <http://www.cherrydale.net/referrals.html> (the referrals button is on the navigation bar at the top of any page of cherrydale.net). Also: email me to add a category.

UPDATES

Neighborhood Conservation, North 20th Street Style

by Erik Meyers

Hosted by Joan Mashburn and led by Sena B. Wijesinha (Capital Projects Coordinator), a meeting on July 30 brought affected property owners up to date on plans for the Neighborhood Conservation Project slated for 20th Street between Kenmore and Monroe, North. The County sought residents' feedback on a variety of project elements and reaction in general to their plans.

A primary goal of this NC project is to provide a sidewalk connection between new Kenmore and older Monroe Street sidewalks. Only a half block of 20th near Monroe (adjacent to Cherrydale Community Church) currently has a sidewalk. As is standard practice in NC projects, the County will completely replace the street. For this project, the work will also correct a major historic misalignment of County-owned right of way (ROW) and the actual street location at the intersection with Lincoln Street.



The current plan is for a street width of 22 feet to be maintained except for one small section between Kenmore and Lincoln where it would narrow to 20 feet, as a measure to protect a mature oak located on County ROW. Parking would be generally restricted to the south side of 20th where the new sidewalk is planned. Curb and gutter will be placed on the north side of 20th. Sidewalk width would vary between a minimum 4 feet up to a maximum of 7.5 feet, the latter including a 2.5 foot grass strip, and include handicapped access ramps at each corner (except at Monroe Street). The new walk would connect with the existing concrete sidewalk by Cherrydale Community Church.

County's team detailed plans to replace water lines and storm drains under the street. Gas lines may also need to be replaced although several residents noted that a contractor had recently replaced the lateral lines along most of 20th. New storm drains would be placed on both sides of the street as well as on both sides of the Lincoln Street intersection. A total of six new street lights are planned. While the project is scheduled for 2014, no official starting date has yet been set. The county estimates it will take approximately six months to complete once underway.

Reaction from affected residents was generally favorable, and the County's team agreed to look into a number of specific concerns that were raised.

(for photos and more on those concerns, go to: <http://www.cherrydale.net/north-20th-st-nc.html>)

Update on Lights Near Washington-Lee

by Meg Miller Rydzewski

Repairs have been completed at the cobra pole on N. Stafford St. at I-66. It has been updated with an LED fixture, according to Assistant County Manager Wilfredo Calderon. He adds that lights in the parking lot by Washington-Lee on the I-66 overpass are maintained by Arlington Public Schools (APS). Mr. Calderon has been in touch with APS about it. Apparently, their staff checked on the lighting issue and adjusted the timing system accordingly. As a follow up, APS will again inspect the lighting system once they have completed their school opening procedures.

Update on Oak Grove Park

by Debby Cook

I'd like to take this opportunity to introduce myself to you and give you some information about the Neighborhood Conservation (NC) project I'm heading up. My name is Debby Cook and I live on N. Randolph Street. Last fall, the plan I presented about improving Oak Grove Park received enough votes to become Cherrydale's current NC project. Since then, a dedicated group of Cherrydalers created the survey that many of you filled out this spring (thank you!) and we've been busy analyzing the data in order to have a report

continued...



UPDATES

to present to the community for a vote later this year.

As it happens, Arlington County also has plans to improve Oak Grove Park. The County plans will be underway as of this fall. The improvements they are planning include the following:

- an entrance from N. 17th Street that will include stone columns and an archway with the name of the park
- a graded path wide enough to meet ADA requirements (6 feet) that will circumnavigate the park (going from N. 17th street to the left of the existing play structure and to the right around the soccer field)
- the existing chain link fence will come down and another fence will go up
- improvement of the existing soccer field (this may not begin until spring or summer of 2014 but will include killing the existing grass, installing a sprinkler system, and new top soil and Bermuda grass)
- the placement of one low (2 tier) bleachers along the west side of the soccer field adjacent to the new path
- new trees will be planted (45!)
- benches and a bike rack

The County parks designer in charge of this project is M. Valerie Mosley, and if you'd like to see the drawings she presented at a civic association meeting last year, you can link to the Arlington County Department of Parks and Recreation "in design" page – on which you can find the Oak Grove Park project for Entrance Feature & ADA Accessibility Improvements (shortened URL here: <http://bit.ly/1a30fC5>).

To be clear, the above improvements to Oak Grove Park have nothing to do with the Neighborhood Conservation project for which I am the captain. In fact, we'll be working with a different designer, Kathy von Bredow, when our project gets to the top of the NC queue and can begin the design phase. However, before that happens, I would love to have a group of motivated Cherrydalers who want to work with me on this project (help me investigate current renovations of Arlington County parks & playgrounds to see what we like that the County is doing, research what is possible in the park/playground design world these days that County might not now be doing, etc.). We will also incorporate the input from the people who completed the survey this spring as well as the parameters the County provides us when it is our turn to start the design of the Park.

So, if you are interested in working on the Oak Grove Park NC project, please send me an email (dzcook@verizon.net) with Oak Grove Park in the subject line.

If you'd like to see some parks in Arlington, please refer to a list of suggestions made by Ms. Von Bredow posted to our website here: <http://www.cherrydale.net/oak-grove-park.html>

Tree Canopy Fund Response to Applications

by Ron Kampeas

Hilary Gerson Philips put out the word: Sign up for a tree! The Tree Canopy Fund was ready to plant trees where asked in Arlington, for free, as long as there were residents ready to nurture them. Enhancing our tree canopy is better for the environment, helps alleviate strong winds and has been shown to reduce crime. I identified a number of relatively treeless areas (along 15th street and behind the Safeway) and leafleted them with appeals to anyone who missed Hilary's note on the listserve. The combined result: 16 applications for new trees.



Cherrydale Real Estate Data

by Marcia Bowlds, Cherrydale resident and realtor with McEneaney Associates

- Since January 2013, there have been 31 homes listed, contracted, or sold in Cherrydale with an average sales price 97.44% of list price.
- Of the sold homes, the low sale was \$526,000 and the high sale was \$1,540,000.
- The average sales price was \$900,954; the median price was \$849,450.

Street Lights -- continued from page 1

provided a bit of a historic neighborhood feeling. The new LED lights, on the contrary, are daylight white, interrogation style – and provide so much light, at least for those who live closest to the lights, as is our case, that we can now read a book in our backyards on a moonless night.

That Arlington's New Urbanism policy permits this kind of industrialization of residential habitat came as a surprise. One of us protested the lights the week they were installed, got nowhere with the County and revived objections a year or so later, as other neighbors were also protesting. We doubled the layers of curtains in our bedrooms. ***When we wanted to project a film for a birthday party, our street light was such a hindrance that we successfully covered it with a plastic garbage bag.*** The mysterious installation further enhanced the debate. Meanwhile, similar complaints about the lights were simmering across the county.

The County then held an “LED Streetlight Field Demonstration” on Aug. 6 at 9:30 pm. We gathered at the corner of N. Monroe Street and Wilson Blvd., joined by more than 70 people, plus a number of county officials and staff, including County Board members J. Walter Tejada, Mary Hughes Hines, and Libby Garvey, and the Director of Transportation Dennis Leach. Chairman Tejada made extended remarks, acknowledging the concerns, and referring to the information on the County website. Most officials cited the many advantages to the lights, including reduced operating costs.

County staff also demonstrated the “dimming” process whereby the streetlights come on at dusk at 100 percent of full power and brightness, then are dimmed to 48 percent later in the evening and finally to 23 percent (by around 11 pm) for the duration of the night. The dimming, which by the way also saves energy, produces less CO₂, and makes bulbs last longer, and is controlled by a radio signal to each light. They also explained the “eyebrow” concept, which involves retrofitting the lights by placing little covers over the light-emitting diodes on the side of the light that faces the homes. (The eyebrows can’t actually be seen, as they are under the globe.) Asked whether the County has retrofitted all the LED lights with eyebrows, Dennis Leach said, “I believe we have.” This was a source of confusion for attending residents, who couldn’t detect a reduction in brightness or even whether a light had eyebrows or not.

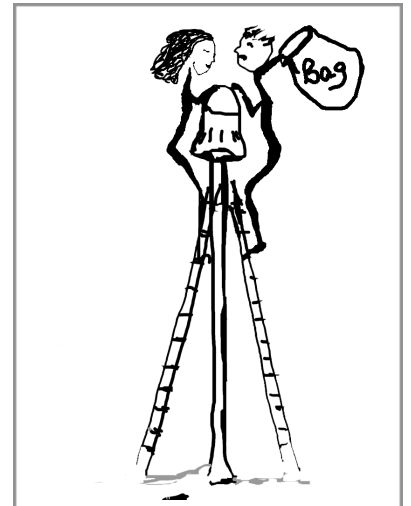
Many residents insisted that the lights are too bright, shine directly in their windows, and also are a “blue wavelength” light, which has been shown to inhibit the production of melatonin in our bodies that is necessary for sleep. One suggestion that circulated is lowering intensity, by swapping the current 5500 Kelvin bulbs for 3500K ones, which are supposedly also less white and would also lower energy use. County staff also said there is a pilot project now to develop streetlights that have completely eliminated LEDs on the house side. The problem is they can’t get the dimmers to work yet on those.

It should be noted that other cities experimenting with LEDs and dimmers have also introduced a sensor system to momentarily increase intensity when a pedestrian, cyclist, or car goes by. (Lights intensify progressively, and not as a pop up; it’s done lamp by lamp, wave like, and not the whole street at once.)

Then there is the color issue. Our bulbs are “daylight” white, which is the most effective for seeing, which is why they’re used on parking lots and in industrial zones. Participants in pilot studies in residential streets seem to prefer “warm” white bulbs. Perhaps our residential streets should be using “warm” white bulbs, and main roads like Lee Highway and Quincy use “daylight.”

The distance between posts is of course also an issue. The farther you spread them, the more intensity you need to cover all. In terms of costs, spreading the posts implies lower initial installment costs, but the stronger bulbs will use more energy, and so on the long term, it may balance out.

Leach said anyone with a concern about a streetlight should email contact Santosh Neupane, Streetlight Engineer, at sneupane@arlingtonva.gov or 703-228-0778, and include the streetlight’s ID number (printed on the pole in yellow) and location. Alas, the lights on 18th Street lack ID numbers.



Homemade street light dimmer
(drawing by Maureen Ross)

CARING NEIGHBORS

Anonymous Caring BUSINESS Neighbor Widens Sidewalk

by Meg Miller Rydzewski

An anonymous donor paid to have the sidewalk at the northeast corner of the Safeway parking lot (on N. Monroe) widened from 29 in to 5 ft, thus allowing wheelchairs and strollers to easily pass. Whoever you are (CCA Officers know but we are honoring their request to remain anonymous): thank you!

Before



After



TCS Building, Inc.

Class A General Contractor
Serving Arlington since 1981
Residential remodeling

The premier Arlington based design/build contractor

Celebrating 30 years of excellence
High repeat client ratio
Award winning projects
Cherrydale Resident

**Additions, 2nd story additions,
Kitchen/Baths, Basements**

Visit us at: www.tcsbuilding.com
Contact us at: info@tcsbuilding.com
(703) 525-6888

An Ounce of Prevention is Worth a Pound of Cure



We recently saw some great information on insurance.com about the importance of proper home maintenance, and a couple of things grabbed our attention.

FIRE: The national average cost of proper maintenance to prevent fires related to chimneys, faulty electrical systems, and wiring is \$842. The average cost of repairing fire damage is \$31,762.

WATER: Making sure rain gutters are not clogged, roof repairs are made, and tree roots aren't encroaching through a basement wall costs an average of \$551 – but the average cost of repairing and remediating water damage is almost \$7,000.

Proper routine home maintenance also saves time and money when you are ready to sell – and buyers will notice. If you are considering a move, call today to learn more about preparing your home for today's market.



Marcia Bowlds
REALTOR®, GRI ABR
703-507-1635
mbowlds@mcenearney.com
justaskmarcia.com



4720 Lee Highway
Arlington, VA 22207
703-525-1900

Please visit:
justaskmarcia.com



Not intended to solicit the listings of other brokers.



MARCIA BOWLDS
REALTOR®
GRADUATE REALTOR® INSTITUTE, GRI
ACCREDITED BUYER REPRESENTATIVE, ABR
MEMBER, NVAR MULTI-MILLION DOLLAR SALES CLUB

OFFICE: 703-525-1900
CELL: 703-507-1635
FAX: 703-528-1556
TOLL FREE: 800-826-1612
www.justaskmarcia.com
mbowlds@mcenearney.com

4720 LEE HIGHWAY
ARLINGTON, VIRGINIA 22207

Dominion Hts Site Plan Amendment Vote -- continued from page 1

The CCA met with Phil Meany, retail manager for Dom Heights, John Regan, Christopher CO, Dr. Christine Reardon, Patty brown (Broker) and David Tartar, Esq. to walk through the ground floor and discuss practicalities. The current parking ratio is the norm, 1 space per 250 sf. We fought hard for this ratio back in the day when County supported only half this parking for our "revitalization" district. But County requires 1 space for every 150 sf for medial/ dental practices.

The first floor can be divided into 3 sections. The section nearest Monroe St is still being considered for retail. At least one restaurant deal has fallen through. This section is about 30 ft wide, and very deep, about 4,000 sf. The middle 2 sections together are around 4,400 sf. It is these last 2 that are being considered for purchase by the dentist for her pediatric practice.

The plan would be for 2 dentists, maybe a 3rd eventually, and 3-4 employees per dentist, so staff of around 9 to 12. Several of the employees take the bus. Currently Dr. Reardon's practice is at the NE corner of Wilson and Quincy, above where the Thai restaurant used to be. Parking is expensive there and Dr Reardon believes most of her patients park on the street. Parents often come with 2 or more children, so she believes it's less cars than one might fear.

Dr. Reardon states she would never want evening hours. Usually, her last patient is at 2:30 or 3pm. That of course leaves good parking for retail with evening hours. However, evening hours can't be ruled out in future, say if the practice is sold, etc.

If each dentist sees a child an hour, and each hygienist sees one an hour, that would be six cars an hour plus the 12 employees, reaching their allotted 18 parking spaces (estimating the higher volume scenario). If this were an adult practice, the volume would be higher. One question would be: can we/would we want to limit the practice to pediatric only?

Originally we were told that the retail space has a total of 42 parking spaces, and 18 would be for the dentist, but available to other customers when the office is closed. Bill Novak is reviewing the parking in detail and we will have more specific information at the September CCA meeting. We asked broker Patty Brown to give us addresses

for 5 other dental practices in County so we could check out the parking situation there, and we will present on that too. There is also a potential option to rent some of the underutilized retail parking at Hunters Park say for employees. Officers representing Dominion Heights residents support this site plan amendment and will attend our meeting

The CCA needs your input on not just parking but the use change. On the one hand a dental practice does not "enliven" our commercial district, but it could allow plush retail parking in the evening, on a share basis.

Adding a dimension of complication is the potential loss of parking on the corner of lee hwy for the return of the bus stop, vs relocating it at Car World, which objects, or at Lee and Lincoln, where the condo owners object.

2013 CHERRYDALE CANDIDATES DEBATE !!

Wed, 10/16/13 at 7:30pm at CVFD

Read about it and Submit your questions in advance at:

<http://www.cherrydale.net/2013-cherrydale-candidates-debate.html>

Got weeds? Short of time? Traveling?

Need to prune, plant, or mulch?

We're here to help!



We keep your garden thriving

- * Expert gardening services
- * Scheduled garden upkeep
- * Plant recommendations
- * Garden bed design and installation
- * Pruning of small trees and shrubs
- * Seasonal clean-up
- * Garden coaching

Jo Anne McKey

703-525-2009

www.gardenkeepers.net



Assaggi: (verb) to taste; (noun): an assortment to taste

Osteria: (noun) an Inn, where good food is served in a warm hospitable environment

Assaggi Osteria is open daily from 11:30am, with continuous service throughout the day and into the evening. There is a full bar and an extensive wine by the glass list. Private, semi-private and *al fresco* dining are available.

Chef/Proprietor: Domenico Cornacchia
Chef de Cuisine: Daniele Bolognesi
Host/Proprietor: Giovanni Cesaratto

Chef Cornacchia taps into ages of ancestral Italian cooking each time he steps into his kitchen and brings a rich love of the cuisine that he so skillfully nurtured through the years.

Assaggi Osteria features homemade pastas, great salads, numerous appetizers, fresh seafood, veal, and scrumptious beef. We source whole fresh fish from worldwide sustainable sources, offering the finest bounty the sea has to offer. Produce is purchased from farms and all desserts are homemade.

Notable mentions:

2010, 2011 & 2012 Open Table Diner's Choice Winner
Zagat Favorable Mention

Washingtonian Magazine's Best of McLean and Vienna - January 2011 & August 2012

6641 Old Dominion Drive, McLean, VA 22101 Tel. 703.918.0080

Located in the McLean Square Shopping Center.

View our menus online at: www.AssaggiOsteria.com ~ Gift Certificates available on website.



Cherrydale Veterinary Clinic

4038 Lee Highway Arlington, VA 22207
Ph 703-528-9001 Fax 703-243-8586
www.cherrydalevet.com

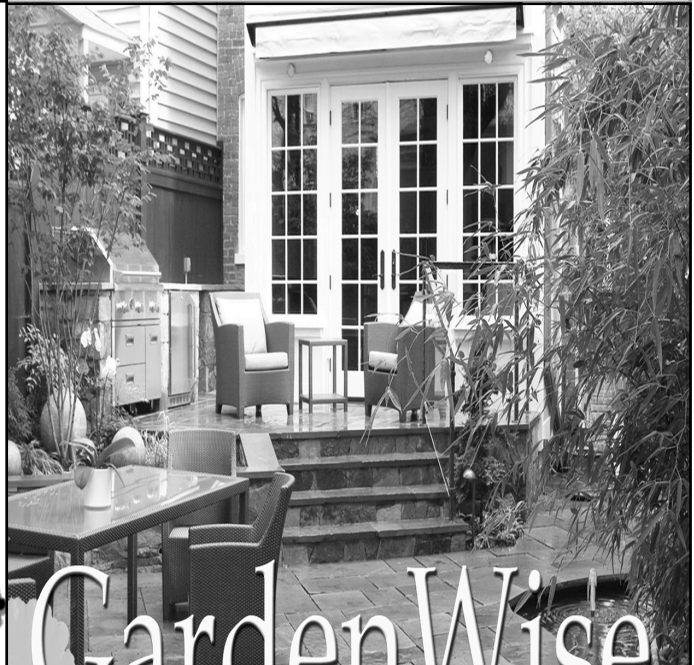
"We Offer Compassion With Competence"

Open 7 day a week
M-F 7 a.m. to 9 p.m.
Saturday 8 a.m. to 6 p.m.
Sunday 9 a.m. to 5 p.m.



Our Mission

To Enhance the psychological and physical well-being of people by helping extend the length and quality of their pets' lives, thereby preserving the human-animal bond.



GardenWise

2011 LCA AWARD-WINNING DESIGN FIRM

DC 202.543.3422 VA 703.243.5982

www.gardenwiseinc.com

Cherrydale Library Happenings

Volunteer Fire Department

The Cherrydale Branch Library
2190 N. Military Road; 703-228-6330
<http://www.CherrydaleLibrary.org>



Bring your coffee!

Monday	10 am - 9 pm
Tuesday	1 pm - 9 pm
Wednesday	1 pm - 9 pm
Thursday	10 am - 9 pm
Friday	10 am - 5 pm
Saturday	10 am - 5 pm
Sunday	CLOSED

Fall Kids' Programs

"Paws To Read": For Emerging Readers & Kids who Love Dogs!: Sat., Sept. 21 (3-4 pm). Specially trained dogs will be available for 15-min. reading sessions, by appointment. For K - 5 students. Free, but registration is required. Call or stop by circulation desk. Future monthly sessions TBA.

Three Fall Storytime Programs (No Registration Required):

- Mondays @ 6:45 pm "Pajama Storytime" (all ages): Starts Sept. 9.
- Tuesdays @ 4:30 pm "Over Twos" (ages 2-5): Starts Sept. 10.
- Thursdays @ 10:30 am "Stop in for Stories" (ages 0-5): Starts Sept. 12.

Book Discussions for Adults

Call to sign up & check availability of copies from the special discussion book collection.

Mon., Sept. 9 @ 7:30 pm: *Hotel on the Corner of Bitter and Sweet*, by Jamie Ford.

Mon., Oct. 7 @ 7:30 pm: *1861: The Civil War Awakening*, a New York Times Notable Book, by Adam Goodhart.

*** No Nov. mtg., so the Nov./Dec. book will be given out at the Oct. discussion.***

Mon., Dec. 9 @ 7:30 pm: *Flight Behavior: A Novel*, by Barbara Kingsolver.

by Chief Scott Pardi, CVFD

All fire stations in Arlington County will host an Open House for Fire Prevention Week 2013 on Saturday, October 12, 2013. Your local Cherrydale Volunteer Fire Station, located at 3900 Lee Highway, Arlington, VA, will host a variety of Fire Prevention Week activities during the Open House from 10AM-2PM.

During the Open House, neighborhood residents will have the opportunity to interact with CVFD Firefighters and Emergency Medical Technicians, observe demonstrations of firefighter skills such as rapidly donning firefighting attire and self-contained breathing apparatus, learn about the fire apparatus and firefighting tools, and even climb inside a real fire engine! Additionally, residents will have the opportunity to learn valuable fire prevention tips and how to plan and practice escape from a home in case a fire occurs.

Fire Prevention Week is actively supported by fire departments across the country. For 88 years fire departments have observed Fire Prevention Week, making it the longest running public health and safety observance on record.

As always, we'll have a moon bounce and food. You can build your own fire station, firefighter badges and Dalmations in the arts and crafts area.

Please come out, bring the kids and learn more about fire safety! For more information on Fire Prevention Week 2012, please contact the Cherrydale Volunteer Fire Department by filling out the contact form found here: <http://www.cherrydalevfd.org/contact.html> or visit www.firepreventionweek.org.



CHERRYDALE MERCHANDISE

New!! CAR MAGNET!! \$3 Quantity: _____ x \$3 = _____

Reusable Shopping Bags: \$10 for 4 Qty: _____ x \$10 = _____

Reusable Shopping Bags: \$3 for one Qty (to 3): _____ x \$3 = _____

Baseball style cap: \$10 Qty: _____ x \$10 = _____

T-shirt (circle size): \$10 Qty: _____ x \$10 = _____

Adults sizes: S M L XL XXL

Children's: S M L or Infant

Ceramic Mug: \$10 for four Qty: _____ x \$10 = _____

Ceramic Mug: \$3 for one Qty (to 3): _____ x \$3 = _____

Sport water bottle: \$10 Qty: _____ x \$10 = _____

Garden apron: \$15 Qty: _____ x \$15 = _____

TOTAL: _____ \$ _____

I've enclosed \$ _____. Please deliver my items to me at (please print):

Name: _____ Phone: _____

Address: _____

Contact: Katherine Christensen at treasurer@cherrydale.net with questions.
 Make check payable to: Cherrydale Citizens Association
 Mail form and check to:
 CCA, Katherine Christensen, 1909 N. Randolph Street, Arlington, VA 22207



CCA CONTACTS

- CCA Officers:**
- President**
Maureen Ross, president@cherrydale.net
- Vice President**
Andy Claster, vp@cherrydale.net
- Secretary**
Meg Miller Rydzewski, secretary@cherrydale.net
- Treasurer**
Katherine Christensen, treasurer@cherrydale.net
- Civil Federation Delegates:**
CCA Officers, president@cherrydale.net
- NC Advisory Committee Reps:**
Jim Todd, jimtodd@gmail.com
Lita Miller, litamiller@yahoo.com
Maureen Ross, president@cherrydale.net
Claire Meyers
- Welcome Wagon:**
Amy Wheelock, welcomewagon@cherrydale.net
- Historian:**
Kathy Holt, sdakss@aol.com, 703-528-1548
- Listserv Administrator:**
CherrydaleCitizens-owner@yahoogroups.com
- Web Editor (www.cherrydale.net):**
Meg Miller Rydzewski, secretary@cherrydale.net
- Newsletter Editor:**
Meg Miller Rydzewski, secretary@cherrydale.net
- Newsletter Distribution Captains:**
West: Patti Phelps, phlash_phelps@yahoo.com
North: Lore Cleek, 703-276-9880
East: Jim Fowler, jdf1903@verizon.net
- Newsletter Advertising:**
Laurel Gowen, laurelgowen@gmail.com
- Social Coordinator:**
Debra Berke, daberke6@yahoo.com
- Streetscape and Tree Canopy Committee:**
Bill Novack, wjnovack99@aol.com
Erik Meyers
Ron Kampeas

JOIN THE CCA

Have you paid your dues for 2013? They are due in January of every year.
 Dues help cover the cost of community events, our website and this newsletter.
 Mail form & payment to:
 CCA, Katherine Christensen, 1909 N. Randolph St, Arlington, VA 22207
 _____ \$5 Household _____ \$10 Business _____ \$1 Seniors (Age 60 +) _____ Donation

Name: _____

Email: _____ Phone (preferred #): _____

Address: _____

_____ Please add me to the Cherrydale Phone Directory (your info will remain private)

_____ Please add me to the Cherrydale Listserv

I'd like to help by volunteering for (circle below):
 social, website, parks, photos, other: _____

Contact: Katherine Christensen at treasurer@cherrydale.net for more details.

Recent Hot Topics on the Listserv:

crime, curb alerts, lost pets, houses for sale, tutors, babysitters, nannies...
If you're not on the listserv, you're missing out!
 To subscribe to the listserv, send an email to: CherrydaleCitizens-subscribe@yahoogroups.com

CONNECT WITH US!

Visit our website
 (www.cherrydale.net) for
 lots more information
 about Cherrydale!



You'll also find links to our
 CCA Google Calendar, our
 LinkedIn Group, our
 Facebook page, and our
 Yahoo! Group.

