

SWEET&SOUR NEWS

THE QUARTERLY NEWSLETTER OF THE CHERRYDALE CITIZENS ASSOCIATION • Fall 2018

Next Meetings of the
**CHERRYDALE
CITIZENS
ASSOCIATION**

Joint Meeting with Ballston-Virginia Square Civic Association to Discuss Key Elementary-Science Focus Building Swap
Monday, Sept. 24, 7:00pm
Science Focus School
1501 N. Lincoln St.

Meeting to Discuss Five Points Intersection
Wednesday, Oct. 3, 7:30pm
H.B. Woodlawn Library
4100 Vacation Lane
Third Floor

Inside this Edition:

Proposed Key Elementary-Science Focus Swap	1
Five Points Intersection Meeting	1
The CCA Needs You	4
Help Bring Back Cherrydale's July 4 th Party	4
Artis Revises its Senior Living Proposal	5
Ed Center High School Update	6
Smaller VDOT Toll Sign	7
Cherrydale Library Happenings	8
CCA Information	8
Connect with Us	8
Join/Maintain Your CCA Membership	8

September 24 Joint Meeting with Ballston-Virginia Square Civic Association to Discuss Key Elementary-Science Focus Building Swap

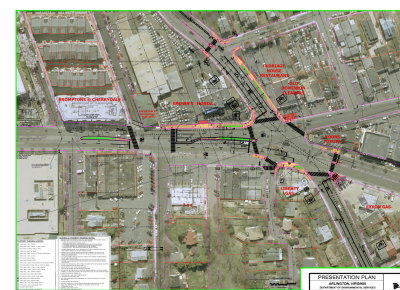
Join us for a joint meeting of the Cherrydale Citizens Association and the Ballston-Virginia Square Civic Association on **September 24, 7pm**, at Science Focus School, 1501 N. Lincoln St., to discuss Arlington Public Schools' proposal to swap Key Elementary and Science Focus Schools. APS staff proposed this switch in late August, and it proposes that the switch take effect in fall 2020 or fall 2021. APS staff claims that they can make this switch without approval of our elected School Board.



This proposal leaves many unanswered questions. Key's Spanish immersion program currently has more students than can fit into the ASFS building and trailers. APS proposes to either shrink the program or further reduce outdoor space. Additionally, APS has not addressed the impact on native speakers who live near Key School but whose families have indicated that they would not send their kids to the new location. Nor has APS addressed what would happen to Virginia Square and Cherrydale students who transferred to Science Focus based on location. Our goal in Cherrydale is to increase walkability to neighborhood schools. This does not seem like a step in the right direction. Come to the meeting to learn more and make yourselves heard.

October 3 Meeting to Discuss Five Points Intersection

Join us on **October 3, 7:30 pm**, in the H.B. Woodlawn School Library to discuss the new problems caused by the County's reconstruction of the Five Points Intersection.



The Five Points Intersection has long been a problem for drivers, cyclists and pedestrians. Years after Cherydalers offered their input, the County went ahead with its own plans for the intersection. While the project offers some improvements, on balance it seems to have created more problems than it has solved. We have asked that County staff who have decision-making authority attend our meeting, but we don't have confirmation on who exactly from the County will be attending. Here's a working list of some of our concerns:

1. Eastbound traffic on Old Dominion during morning rush hours backs up much more substantially than it ever used to, with the back-up extending beyond Glebe Road. We are requesting that the County prioritize its signal re-timing program for this stretch of Lee Highway/Old Dominion to alleviate this back-up.

2. The County's signal programming decisions concerning the left turn signals for cars
(cont'd on page 2)

October 3 Meeting to Discuss Five Points Intersection *(cont'd from page 1)*

turning left from westbound Lee Highway onto either Quincy Street or Old Lee Highway is confusing and problematic. The left arrow signal turns red after only 7- or 8- seconds after turning green, causing cars to come to a full stop. The left arrow signal then quickly resumes as a blinking yellow left arrow for another 9- or 10-seconds, but drivers must contend with oncoming traffic from Old Lee Highway. This signaling program dramatically reduces the flow of left-turning traffic and causes cars to back-up on westbound Lee Highway, especially during the afternoon rush hours. We are requesting that the County revisit this signal timing.

3. The new left turn patterns for cars turning left from Military Road onto Lee Highway and from Quincy Street onto Old Dominion is also reducing traffic flow through the intersection. The new pattern allows far fewer left-turning cars to clear the intersection before the light turns red, and also causes a queue of left-turning cars that have already entered the intersection from Military Road to remain in the intersection after the left arrow for westbound cars on Lee Highway turns green, further reducing the number of cars that can turn left from westbound Lee Highway onto either Quincy Street or Old Lee Highway. This also poses a hazard to pedestrians in the new crosswalk on Lee Highway. We are requesting that the County restore the long-standing left-turn pattern for Quincy Street and Military Road and place signs to so indicate.



*Can you see oncoming cars?
The new crosswalk?*

4. The signal visors on the traffic lights for westbound cars proceeding from westbound Lee Highway to Old Dominion are so restrictive that westbound cars cannot even clearly see the signals. This is causing confusion and reducing the flow of westbound traffic through the intersection.

5. Collectively, these signal problems make for angry drivers who tend to speed through the intersection after the signals have changed, which is extremely dangerous for pedestrians and cyclists.

6. The new pedestrian crosswalk on the east side of the intersection near Browns Honda and Northside Vet is very hard to see for drivers turning left from Military Road onto eastbound Lee Highway and is behind the stop line for westbound Lee Highway. Drivers caught in the short left-turn signal from westbound Lee Highway tend to block the cross walk, and other westbound cars also block the crosswalk. We are requesting that the County modify many aspects of the intersection to make the crosswalk safe, including the left-turn system for cars coming from Military Road.




7. The pedestrian signal across Military Road automatically comes on almost 20 seconds *after* the light of westbound cars on Lee Highway turns green and only after the signal for eastbound Old Dominion turns green. We are requesting that this be changed to follow the signal timing for westbound Lee Highway.

8. The pedestrian signal across Old Lee Highway only turns on when the light is green for Military Road and Quincy Street. We
(cont'd on page 3)

Tired of looking for the home of your dreams and coming up empty-handed?

STOP LOOKING, START DESIGNING!



CHRIS CLARK
Senior Loan Officer
NMLS ID# 476398
cclark@mvbmortgage.com
customconstructionloans.com
703.622.3354

Winner
BEST OF
Arlington
2017

MVB MORTGAGE

MVB Mortgage, MVB Mortgage of PA, and MVB Mortgage of KY are registered trade names of Potomac Mortgage Group, Inc., a wholly-owned subsidiary of MVB Bank, Inc. Company NMLS ID# 181319 (www.nmlsconsumeraccess.org) • This is an advertisement.

EQUAL HOUSING LENDER

October 3 Meeting to Discuss Five Points Intersection *(cont'd from page 2)*

are requesting that the pedestrian signal come on after the left arrow for cars traveling westbound on Lee Highway turns red but the light is green for cars traveling eastbound on Old Dominion.

9. The pedestrian signal across Quincy Street only turns on when the light is green for Old Dominion. We are requesting that the pedestrian signal also come when the light is green for cars traveling eastbound on Old Lee Highway.

10. One of the new curb ramps for the new crosswalks come up at 90 degrees from the street. This design is challenging for people on wheels (wheelchairs, strollers, bikes, scooters, etc.) and poses an unnecessary risk of falls. We are requesting that the County reinstall the curb with sloped sides, similar to what the County recently installed at Route 50 and Henderson Streets.

11. The stop-for-pedestrians placard in the middle of the street on Military Road near the Vacation Lane crosswalk is no longer on the yellow line, and now sits at least one foot into the southbound traffic lane of Military Road. This is causing cars to swerve into the newly painted bike lanes on this part of Military Road, and presenting a serious hazard to cyclists. We are requesting that the County relocate this placard ASAP.

12. We remain disappointed that the County did not eliminate the slip lane from Military Road to Old Dominion. The slip lane seems unnecessary and is not pedestrian friendly. Cars using the slip lane are stopping in the pedestrian crosswalk before turning onto Old Dominion. We are requesting that the County now eliminate the slip lane or at least ensure that there is adequate signage to ensure that cars actually yield to pedestrians and stop blocking the crosswalk.



13. Cars and work vehicles are parking/puling over in some of the new bike lanes, especially on southbound Quincy Street south of 21st Street. This causes bikers to reenter the traffic lane. We are requesting that the County install bollards, ensure that it has adequate no-parking signs along this stretch of Quincy Street, and actively ticket & tow violators to ensure the bike lanes are actually usable for bikers.

**Does your garden need a re-set?
Got weeds? Short of time? Traveling?
Need to prune, divide, plant or mulch?
We're here to help!**

- * Expert gardening services, one time or on-going maintenance
- * Plant recommendations
- * Perennial garden design and installation
- * Native plants/specialty gardens
- * Seasonal clean-ups, mulch, bed definition/enlargement

Garden Keepers *We keep your garden thriving*
Jo Anne McKey
703-525-2009
www.gardenkeepers.net

14. Several cars turning left from southbound Pollard Street onto eastbound Lee Highway are still coming to a full stop in front of the Cherrydale Volunteer Fire Department and waiting for the Lee Highway light to turn green. This also blocks traffic for cars proceeding north on Pollard Street onto Lee Highway. Although the County has added do-not-block intersection signs in this area, the intersection remains confusing for drivers. We are requesting that the County put the same yellow X-pattern striping in front of the Cherrydale Volunteer Fire Department that it has placed in front of County-owned Fire Station No. 3 just up the street on Old Dominion.

15. Now that the County has re-aligned the eastbound lanes in front of the Cherrydale Volunteer Fire Department and the 3800 block of Lee Highway (in front of Gaijin Ramin/Subway/Fit To Be Tan), visibility for drivers turning from Oakland Street is much improved, and the County's/VDOT's no parking bollards in front of Subway seem unnecessary. Those businesses have long struggled because of the lack of adequate "teaser" parking along Lee Highway, and we recently lost a much-loved business due to inadequate customer traffic. The County seems to allow parking closer to almost every other intersection. We are requesting that the County/VDOT reduce the no-parking zone to match up with other intersections.

The CCA Needs Cherrydalers to Come to Our Meetings and is Looking for New Leaders

Civic engagement is more important than ever. We ask you to join in at the neighborhood level by becoming an active participant in the Cherrydale Citizens Association. The CCA plays a unique role in guiding transportation, development, and school issues going on in our neighborhood. We help all our residents and businesses interact with County and State officials as well as public private developers who are bringing about many changes about in Cherrydale. These changes have a real impact on your lives, so you should be a part of them. The CCA can only serve you if you come to our meetings, where you can meet your fellow Cherrydalers, become better informed, make yourself heard, and, most-importantly, vote.

We also need Cherydalers to step up and play a leadership role in Cherrydale. We are currently looking for new volunteers to serve as our Secretary, our Treasurer, our Newsletter Editor, and our Social Events coordinator. And we almost always have volunteers forming committees or joining in to address particular issues. We hope to see you at our upcoming meetings and join us in making a Cherrydale a better place for everyone.

Help Us Bring Back Cherrydale's July Fourth Block Party

Last year we had to cancel our much-loved July Fourth Party at 21st & Stafford Streets for lack of volunteer support. Cherrydale's annual barbeque, potluck, and fireworks block party is hands down the best small-town July Fourth Party and one of the highlights of living in Cherrydale.

It takes a lot of advance planning and a lot of work to put this event together. We raise funds from Cherrydale businesses so we can hire a DJ, rent a moon bounce and port-a-potty, and grill hamburgers and hotdogs. We need volunteers to take on those fundraising and planning tasks. We also need volunteers to set-up, run the party, and clean-up.

Many thanks go to Cherrydale President Jim Todd, and Cherrydalers Michael DeCarlo, and Melissa Mitchell for organizing the party in past years (and a special thank you to Cherrydaler Sandy Moore for taking the lead in 2017). But **we need your help to make this great party happen**. Please contact Jim Todd, at president@cherrydale.net if you'd be interested in playing a lead role in bringing this party back. We really appreciate everything you can do to help keep Cherrydale a tight-knit community.



COMPANY FLOWERS! & GIFTS, TOO!

During the Month of September! Halloween Fascinators

The Washington Post:
Arlington's "quirky" gift shop

2107 N. Pollard St. Arlington, Va
Across Lee Highway from historic Cherrydale Fire House

703-525-3062
Open 9-6 everyday but Sunday
Newsletter? Contact: john@companyflowers.com
or Call 800-808-2222



\$250 Off
Your First Printing Job of \$1,000 or more.
Valid for first time customers only. Offer can't be combined with any other offer. Expires 12/2016

\$100
For 1,000 8.5x11 1 Sided Full Color Flyers
Valid for first time customers only. Offer can't be combined with any other offer. Expires 12/2016

QUALITY
IT'S NOT JUST OUR NAME. IT'S OUR PROMISE.

PROVIDING OUR CLIENTS FULL PRINTING SOLUTIONS SINCE 1988
OFFSET PRINTING | DIGITAL PRINTING | BINDERY | MAILING

Quality Graphics & Printing, Inc.
25430 Rock Haven Way, #122 | Dulles, VA 20166
703.661.6060 | WWW.QGPRINT.COM



Dominion Floors
Since 1968
Independent and Cherrydale owned

**Dustless Sanding—Carpet and Runners—Wood—
Cork—Ceramic — Residential — Commercial**

Free estimates and personal service

703-536-4116 Dominionfloors.net
Domfloors@yahoo.com

Artis Senior Living Revises its Proposal to Build Assisted-Living and Memory-Care Facility at Old Lee Highway & Taylor Street

On September 5, the Cherrydale Citizens Association, Waverly Hills Civic Association, and Lee Highway Alliance hosted a joint meeting to hear Artis Senior Living present its revised proposal to build an assisted-living and memory-care facility.

Artis is proposing to build its facility on the site of 2.8-acre “Courembis” property, on the northwest corner of Old Lee Highway and Taylor Street. Artis is a for-profit senior care company. It plans to place 184 units on the property, about half of which would be devoted to memory care. Artis estimates that there might be about 45 employees on the site during the day shift. It would have to go through Arlington County’s site-plan process. The site is currently zoned primarily for multi-family housing and townhouses. The process still has years to go.

Artis’s revised proposal shows promise. They are now proposing a 6-story instead of a 7-story building. They are also now proposing a publicly-accessible park on the corner of Old Lee and Taylor Street and are now proposing to move the parking underneath the building. They have hired local architects who seem to have a good understanding of design concepts and have studied the neighborhood.

We really like these initial changes, and we look forward to continuing to work with Artis as they move forward. Please join us as we move forward together.



Still the #1 Remodeling Contractor in Arlington

Pulling more permits in Arlington than any other contractor



Specializing in Arlington Homes

GET A FREE QUOTE TODAY
703-536-0900 | CookBros.org

New Ed Center High School Public-Facility and Building-Level Planning Committees are Meeting

Arlington Public Schools is moving ahead with its \$37 million plan to renovate the former Ed Center into a 600-seat high school “program.” The new school is set to open in fall 2021.

As part of that process, Arlington County’s Public Facilities Review Committee (PFRC) has added a subcommittee to review public uses of the new Ed Center school, and APS has created a Building Level Planning Committee (BLPC) to coordinate with the community about the design of the building.

The PFRC subcommittee and the BLPC will begin their tasks with a series of joint meetings **at 7:00pm on September 18, October 16, November 15, and December 4** in the Little Theater at Washington Lee High School, 1301 N. Stafford St. Additionally, the groups will hold a public meeting on **November 15, 7:00pm** in the same location. The CCA has appointed representative to both committees.



Cherrydale Veterinary Clinic
4038 Lee Hwy-Arlington, VA 22207
Ph 703-528-9001 Fax 703-243-8586
www.cherrydalevet.com

“We Offer Compassion With Competence”

Open 7 days a week

Mon-Fri 7 a.m. to 9 p.m.

Sat 8 a.m. to 8 p.m.

Sun 8 a.m. to 8 p.m.



*Are you thinking of making a move,
but not sure who you should use for a REALTOR®?*

Sally’s marketing strategy is a proven success. This recent listing received an offer of \$570,000 on the first day. However, the seller followed Sally’s advice and gave the home more time for maximizing showings, and sold their home for \$51,000 above list price.

With my marketing strategy, this \$549,000 home received **21 offers** in **6 days**. Two contracts were willing to pay \$600,000.

- We DID NOT take the first offer at \$570,000
- We DID NOT sell it pre-market (didn’t want to limit who would see the home)
- We DID NOT offer it to builders only (we let the market see it and decide the final price)
- We DID prepare the home for the market
- We DID pre-marketing activities and advertising to get the buzz going
- We DID have a Broker Open to introduce it to REALTORS®, and we held a Public Open House on Saturday and Sunday, taking offers on Monday

Don’t sell your home short!
Work with Sally, an experienced REALTOR®.
Hire Sally to work for you.



SOLD | 7808 Holmes Run Dr, Falls Church, VA 22043



Sally Webster | 703-626-9281

Swebster@McEneaney.com | SallyRealtor.com

Arlington Office

4720 Lee Highway, Arlington, VA 22207

703-525-1900 | McEneaney.com



VDOT Mitigating Visual Impact of New Toll Sign on Lee Highway, Now Working with Cherrydale

Thanks to the hard work of the Cherrydale Citizens Association, VDOT is taking a number of steps to help mitigate the impact of the new HOV Toll Sign on Lee Highway near Kenmore Street.

VDOT has already planted a number of trees and shrubs that, over-time, will help screen the visual impact of the sign pole. It has begun improvements to the pedestrian crosswalk at Kenmore Street, which will culminate with the installation of rapid flashing beacon signs better marking the crosswalk for cars traveling in both directions on Lee Highway.

And this **Columbus Day weekend**, VDOT will remove the existing 13'x16' sign, light bar, and sign pole and replace them with a new matte-black sign pole and a noticeably smaller, 11'x14' sign, with no light bar, and a new matte-black back side.

This small victory came after months and months of VDOT telling Cherrydale that it would not change the sign, and Arlington County staff telling us they couldn't do anything to help us. But we persisted. Over time, VDOT started to indicate a real interest in working with us. And they have been more and more understanding and accommodating ever since. Although the new sign will still be bigger than we would prefer, we're not done yet. We will continue to see what we can do to get VDOT to maybe someday further reduce the size of the toll sign, until it is no bigger than the VDOT toll signs on Spout Run, Glebe Road, and Fairfax Drive. More importantly, we will continue to build on our new relationship with VDOT to address other issues on Lee Highway and I-66. Thanks, VDOT! Together we can do it.



R & M Cleaning Services
We are licensed and insured!

- *RELIABLE
- *EXPERIENCED
- *GOOD REFERENCES
- *FLEXIBLE SCHEDULING
- *REASONABLE RATES



WE BRING OUR OWN EQUIPMENT
Free-in-home Estimate
Weekly/Bi-weekly/Monthly Or Occasional
Move-in or Move-out
Call Maryen or Raul at
703-321-5335

Systems That Work
Cherrydale, Arlington, Virginia
Since 1994

Computer and network consulting.
Setup, upgrade, and troubleshooting.

571-217-9949
ronhicks@systems-that-work.org
www.Systems-That-Work.org

TAX PREPARATION SERVICES
INDIVIDUAL / TRUSTS / PARTNERSHIPS
ESTATES / CORPORATIONS

R L ANDERSON COMPANY
4620 Lee Highway, Suite 240
Arlington, Virginia 22207

Phone: 703-243-0605 Email: brcode2@aol.com

INTERIOR FIX, LLC
Every space deserves a style.

Interior Design Services &
Seasonal Decorating
www.interior-fix.com

ALLISON D. HORBALY
adh1026@gmail.com

Mention this ad and receive special rates!

CHERRYDALE CITIZENS ASSOCIATION

President - Jim Todd, president@cherrydale.net
Vice President - Gillian Burgess, vp@cherrydale.net
Treasurer - Katherine Christensen, treasurer@cherrydale.net
Secretary - VACANT
Social Coordinator - VACANT
Neighborhood Conservation Advisory Committee Reps.:
Harry Spector, nc@cherrydale.net
Jim Todd, president@cherrydale.net
Newsletter Editor - Jim Todd, newsletter@cherrydale.net
Newsletter Advertising - Laurel Gowen, laurelgowen@gmail.com
Newsletter Distribution Captains:
Dorothy Sauer: djsauer13@yahoo.com
West - Subodh Gupta: subodhg@gmail.com,
North - Chrisna Baptista, chrisna.tan@yahoo.com
East - Amy Wheelock, vacherrys4@gmail.com
Listserv Administrator - CherrydaleCitizens-owner@yahoogroups.com

CONNECT WITH US!

Connect with us on our website, www.cherrydale.net. You'll find all kinds of helpful links. Join our email list serve: CherrydaleCitizens-Subscribe@YahooGroups.com. You can also connect with us on our Facebook Page and follow us on Twitter.

CHERRYDALE LIBRARY HAPPENINGS

2190 Military Rd., 703-228-6330, www.CherrydaleLibrary.org
Mon.&Thurs.: 10:00am - 9:00pm Fri.&Sat.: 10:00am - 5:00pm
Tues.&Wed.: 1:00pm - 9:00pm Sun.: CLOSED

Preschool Storytime Programs

"Under Two Storytime" (0-23 months) - Mondays, 10:30 am. No registration required.

"Stop-in for Stories" (0-5 years) - Mondays, 4:15 pm. No registration required.

"Stop-in for Stories" (0-5 years) -Thursdays, 10:30 am. No registration required.

"Paws to Read" - First Saturday of each month, 3:00-4:00 pm. K-5 students. Specially trained dogs will be available for 15-minute reading sessions. Register at CherrydaleLibrary.org.

Kids STEAM Club: First Thursdays of the month, 4:00-5:00pm. Design, build & play. No registration required.

Halloween Stories & Pumpkin Decorating: Saturday, October 20, 11:00am. Costumes welcome. No registration required.

Tech Help: Having difficulty with a computer program or just need some help figuring out how to do something on the computer? Sign up for a 30-min. one-on-one tutoring session. For info & to register go to CherrydaleLibrary.org.

Knitting Club: Wednesdays, 7:30 pm. All ages and all levels welcome. No registration required.

"Get Crafty" Adults 18+ only. Second Wednesday of the month at 1:30pm. For info. & to register go to CherrydaleLibrary.org.

"Tabletop Gaming Night" - Fourth Monday of the month. Adults 18+ only. Games and instruction provided by NOVA Board Game Group. No registration required.

Daytime and Evening Book Discussion Groups for Adults: visit CherrydaleLibrary.org or call Ruth at the library at 703-228-6330.

Family Chess Club: Tuesdays, 7:00pm. No registration required.

JOIN/MAINTAIN YOUR MEMBERSHIP IN THE CHERRYDALE CITIZENS ASSOCIATION PAY YOUR 2018 MEMBERSHIP DUES

Annual membership dues are due every year.

Membership dues cover the cost of community events, our website, and this newsletter.

Cut out and mail this form along with your payment to:

CCA, Katherine Christensen, 1909 N. Randolph St., Arlington, VA 22207

___ \$5 Household ___ \$10 Business ___ \$1 Seniors (age 60 +) ___ Donation

Name: _____

Email: _____ Phone: _____

Address: _____

I'd like to help by volunteering for (circle below):

Social; Website; Parks; Photos; Other: _____

For more information, contact Katherine Christensen at treasurer@cherrydale.net